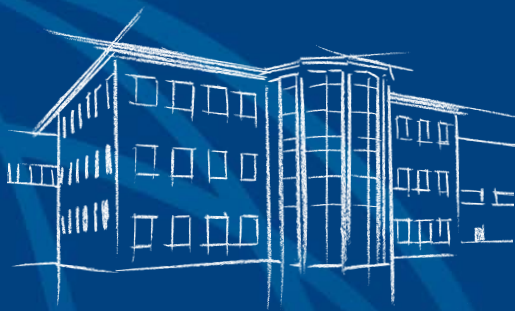


First And Only



**AMCO**  **VEBA**  
A HYVA GROUP COMPANY



[www.amcoveba.com](http://www.amcoveba.com)



# *Product Lines*



## **800 - 900 Series:**

Rack and pinion articulated cranes

Page 4

## **VR Series:**

Slewing bearing articulated cranes

Page 50

## **100 Series:**

3T articulated cranes

Page 56

## **C Series:**

Compact boom articulated cranes

Page 66

## **600T Series:**

Compact Telescopic cranes

Page 74

## **T Series:**

Telescopic boom cranes

Page 78

## **AERO Series:**

Aereal basket cranes

Page 84



# 800 - 900 Series

Rack and pinion articulated cranes

<b>803N - 903N</b>	<b>820</b>
<b>804 - 904</b>	<b>823</b>
<b>805 - 905</b>	<b>924</b>
<b>806N - 906N</b>	<b>825</b>
<b>807N - 907N</b>	<b>828</b>
<b>808N - 908N</b>	<b>929</b>
<b>810</b>	<b>933</b>
<b>911</b>	<b>936</b>
<b>812</b>	<b>946 BASIC</b>
<b>815</b>	<b>946</b>
<b>817</b>	<b>950</b>

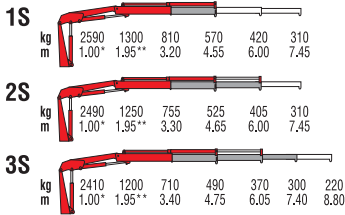


**803N**

**903N RRS**

# 803N

# 903N RRS



\*) Theoretical lifting capacity

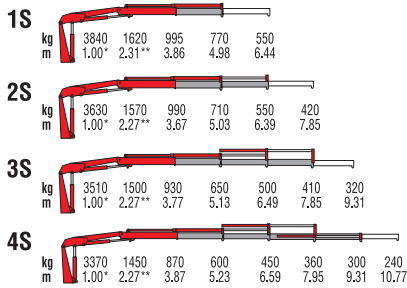
\*\*) Fixed hook capacity (only with moment limiter in EC area)

MODELS	LIFTING MOMENT	HORIZ. EXTENSION	MAX. REACH LIFTING CAPACITY	SLEWING ANGLE	WEIGHT	DIMENSION WxHxD
	tm	m	kg	°	kg	mm
1S	2.59	4.55	570	370	455	1860x1590x490
2S	-	6.00	405	370	490	1920x1590x490
3S	-	7.40	300	370	520	2000x1590x490



**804**

**904 RRS**



\*) Theoretical lifting capacity

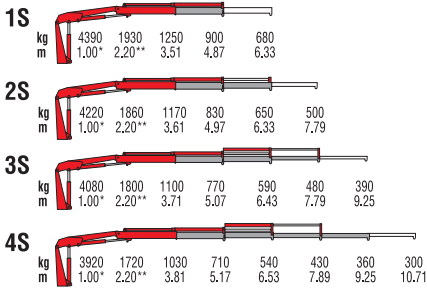
\*\*) Fixed hook capacity (only with moment limiter in EC area)

MODELS	LIFTING MOMENT	HORIZ. EXTENSION	MAX. REACH LIFTING CAPACITY	SLEWING ANGLE	WEIGHT	DIMENSION
	tm	m	kg	°	kg	WxHxD
1S	3.84	4.98	770	380	710	2100x1845x560
2S	-	6.39	550	380	760	2100x1845x560
3S	-	7.85	410	380	810	2100x1845x560
4S	-	9.31	300	380	855	2115x1845x560



**805**

**905 RRS**



\*) Theoretical lifting capacity

\*\*) Fixed hook capacity

MODELS	LIFTING MOMENT	HORIZ. EXTENSION	MAX. REACH LIFTING CAPACITY	SLEWING ANGLE	WEIGHT	DIMENSION WxHxD
	tm	m	kg	°	kg	mm
1S	4.39	4.87	900	380	730	2100x1845x560
2S	-	6.33	650	380	780	2100x1845x560
3S	-	7.79	480	380	830	2100x1845x560
4S	-	9.25	360	380	875	2115x1845x560



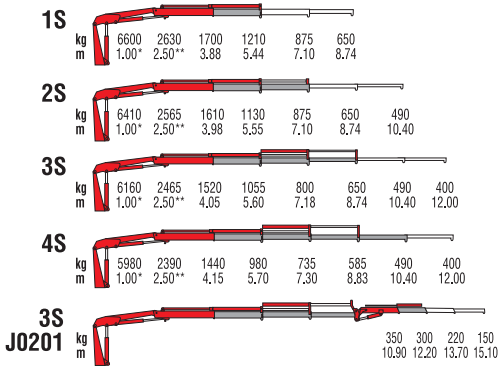
**806N**

**906N RRS**



# 806N

# 906N RRS



\*) Theoretical lifting capacity

\*\*) Fixed hook capacity

MODELS	LIFTING MOMENT	HORIZ. EXTENSION	MAX. REACH LIFTING CAPACITY	SLEWING ANGLE	WEIGHT	DIMENSION
	tm	m	kg	°	kg	WxHxD
						mm
1S	6.60	5.44	1210	387	900	2220x1940x600
2S	-	7.10	875	387	970	2220x1940x600
3S	-	8.74	650	387	1030	2220x1940x600
4S	-	10.40	490	387	1080	2250x1940x600
3SJ0201	-	12.20	300	387	1210	2250x1940x725



**807N**

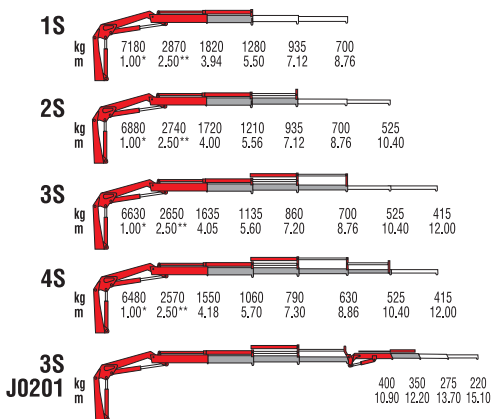
**907N RRS**



Only with  
CE version

# 807N

# 907N RRS



\*) Theoretical lifting capacity

\*\*) Fixed hook capacity

MODELS	LIFTING MOMENT tm	HORIZ. EXTENSION m	MAX. REACH LIFTING CAPACITY kg	SLEWING ANGLE °	WEIGHT kg	DIMENSION WxHxD mm
1S	7.18	5.50	1280	387	920	2310x1980x600
2S	-	7.12	935	387	1000	2310x1980x600
3S	-	8.76	700	387	1060	2310x1980x600
4S	-	10.40	525	387	1120	2310x1980x600
3SJ0201	-	12.20	350	387	1240	2310x1980x730



**808N**

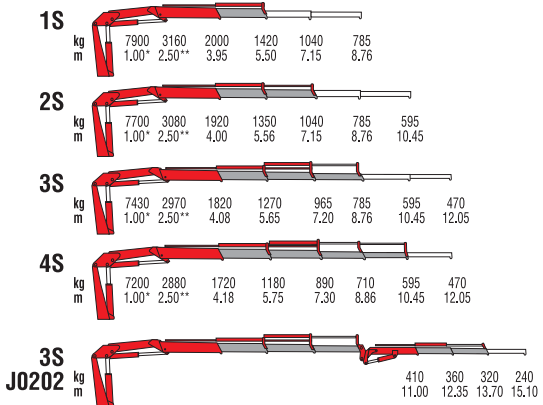
**908N RRS**



Only with  
CE or Radio  
version

# 808N

# 908N RRS



\*) Theoretical lifting capacity

\*\*) Fixed hook capacity

MODELS	LIFTING MOMENT tm	HORIZ. EXTENSION m	MAX. REACH LIFTING CAPACITY kg	SLEWING ANGLE °	WEIGHT kg	DIMENSION WxHxD mm
1S	7.90	5.50	1420	387	950	2310x1980x600
2S	-	7.15	1040	387	1030	2310x1980x600
3S	-	8.76	785	387	1090	2310x1980x600
4S	-	10.45	595	387	1150	2310x1980x600
3SJ0202	-	13.70	320	387	1300	2310x1980x730

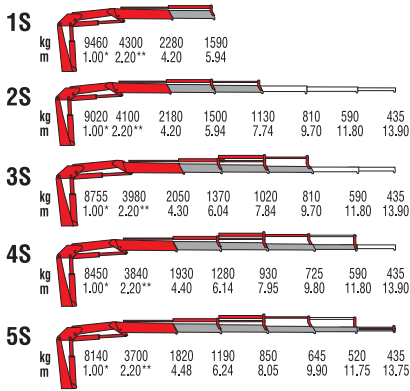


# 810



Only with  
CE or Radio  
version





\*) Theoretical lifting capacity

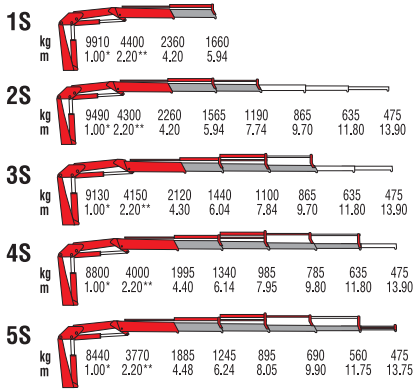
\*\*) Fixed hook capacity

MODELS	LIFTING MOMENT tm	HORIZ. EXTENSION m	MAX. REACH LIFTING CAPACITY kg	SLEWING ANGLE °	WEIGHT kg	DIMENSION WxHxD mm
1S	9.46	5.94	1590	395	1230	2480x2170x640
2S	-	7.74	1130	395	1335	2480x2170x640
3S	-	9.70	810	395	1430	2480x2170x640
4S	-	11.80	590	395	1520	2480x2170x640
5S	-	13.75	435	395	1590	2480x2170x750



# 911





\*) Theoretical lifting capacity

\*\*) Fixed hook capacity

MODELS	LIFTING MOMENT	HORIZ. EXTENSION	MAX. REACH LIFTING CAPACITY	SLEWING ANGLE	WEIGHT	DIMENSION WxHxD
	tm	m	kg	°	kg	mm
1S	9.91	5.94	1660	395	1240	2480x2170x640
2S	-	7.74	1190	395	1345	2480x2170x640
3S	-	9.70	865	395	1440	2480x2170x640
4S	-	11.80	635	395	1530	2480x2170x640
5S	-	13.75	475	395	1600	2480x2170x750

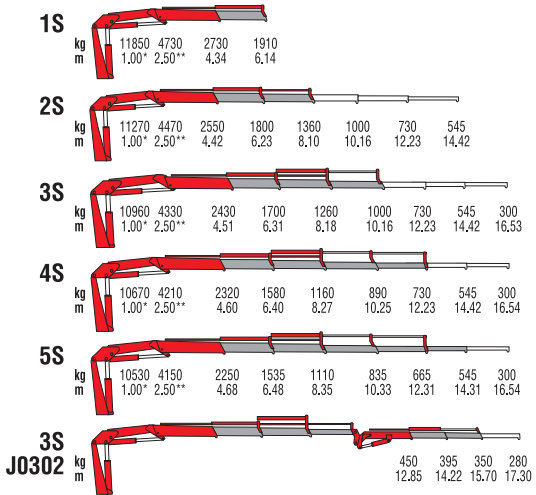


# 812



Only with  
CE or Radio  
version





\*) Theoretical lifting capacity

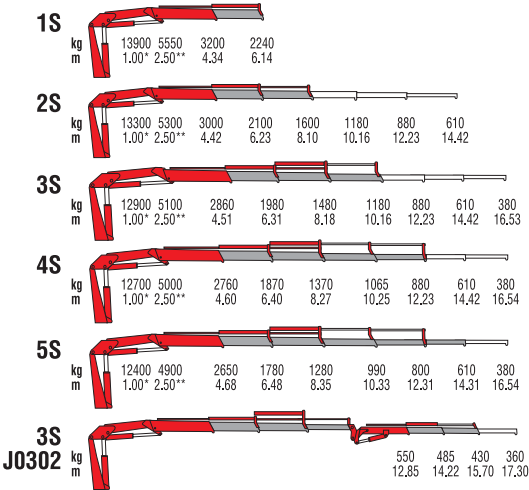
\*\*) Fixed hook capacity

MODELS	LIFTING MOMENT	HORIZ. EXTENSION	MAX. REACH LIFTING CAPACITY	SLEWING ANGLE	WEIGHT	DIMENSION
	tm	m	kg	°	kg	WxHxD
						mm
1S	11.9	6.14	1910	380	1545	2460x2340x855
2S	-	8.10	1360	380	1665	2460x2340x855
3S	-	10.16	1000	380	1770	2460x2340x855
4S	-	12.23	730	380	1865	2485x2340x855
5S	-	14.31	545	380	1955	2500x2340x940
3SJ0302	-	15.70	350	380	2080	2490x2340x1030



# 815





\*) Theoretical lifting capacity

\*\*) Fixed hook capacity

MODELS	LIFTING MOMENT	HORIZ. EXTENSION	MAX. REACH LIFTING CAPACITY	SLEWING ANGLE	WEIGHT	DIMENSION
	tm	m	kg	°	kg	mm
1S	13.9	6.14	2240	380	1680	2460x2340x855
2S	-	8.10	1600	380	1810	2460x2340x855
3S	-	10.16	1180	380	1930	2460x2340x855
4S	-	12.23	880	380	2030	2485x2340x855
5S	-	14.31	610	380	2120	2500x2340x910
3SJ0302	-	15.70	430	380	2240	2490x2340x1030



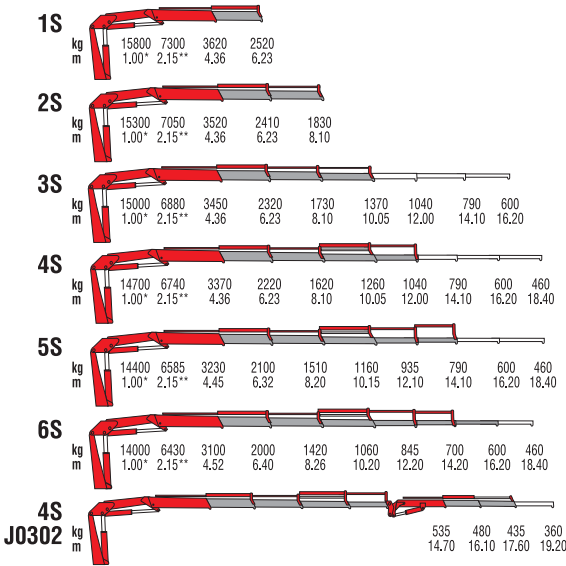
# 817



Only with  
CE or Radio  
version



Soft Descend Drive



\*) Theoretical lifting capacity

\*\*) Fixed hook capacity

MODELS	LIFTING MOMENT tm	HORIZ. EXTENSION m	MAX. REACH LIFTING CAPACITY kg	SLEWING ANGLE °	WEIGHT kg	DIMENSION WxHxD mm
1S	15.8	6.23	2520	387	2130	2480x2295x970
2S	-	8.10	1830	387	2270	2480x2295x970
3S	-	10.05	1370	387	2390	2480x2295x1000
4S	-	12.00	1040	387	2510	2480x2295x1000
5S	-	14.10	790	387	2620	2480x2295x1000
6S	-	16.20	600	387	2700	2495x2295x1000
4SJ0302	-	17.60	435	387	2820	2480x2295x1120



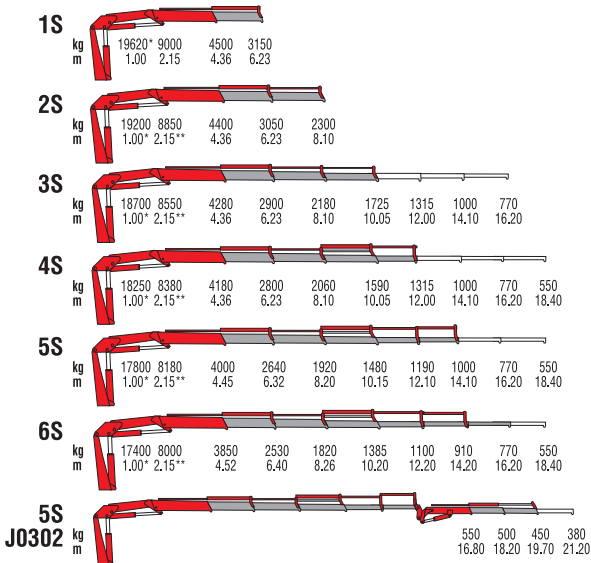
# 820



Only with  
CE or Radio  
version



Soft Descend Drive



\*) Theoretical lifting capacity

\*\*) Fixed hook capacity

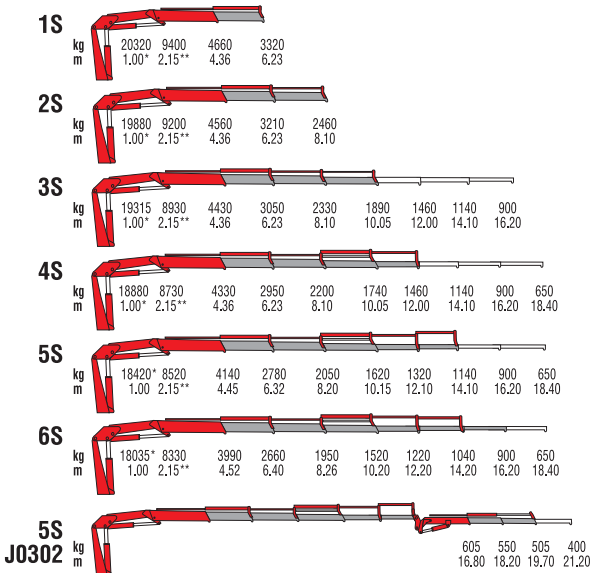
MODELS	LIFTING MOMENT	HORIZ. EXTENSION	MAX. REACH LIFTING CAPACITY	SLEWING ANGLE	WEIGHT	DIMENSION
	tm	m	kg	°	kg	WxHxD
						mm
1S	19.6	6.23	3150	387	2280	2480x2295x970
2S	-	8.10	2330	387	2430	2480x2295x970
3S	-	10.05	1725	387	2570	2480x2295x1000
4S	-	12.00	1315	387	2700	2480x2295x1000
5S	-	14.10	1000	387	2800	2480x2295x1000
6S	-	16.20	770	387	2900	2495x2295x1000
5SJ0203	-	19.70	450	387	3135	2480x2295x1120



# 823

 Only with  
CE or Radio  
version





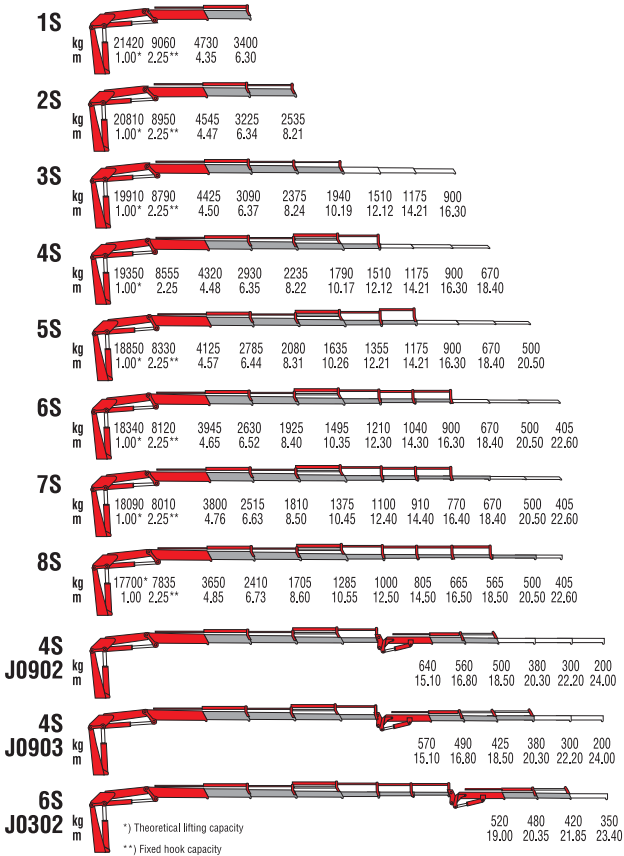
\*) Theoretical lifting capacity  
 \*\*) Fixed hook capacity

MODELS	LIFTING MOMENT	HORIZ. EXTENSION	MAX. REACH LIFTING CAPACITY	SLEWING ANGLE	WEIGHT	DIMENSION
	tm	m	kg	°	kg	WxHxD
						mm
1S	20.3	6.23	3320	387	2310	2480x2295x970
2S	-	8.10	2460	387	2460	2480x2295x970
3S	-	10.05	1890	387	2600	2480x2295x1000
4S	-	12.00	1460	387	2730	2480x2295x1000
5S	-	14.10	1140	387	2830	2480x2295x1000
6S	-	16.20	900	387	2930	2495x2295x1000
5SJ0203	-	19.70	505	387	3165	2480x2295x1120



# 924





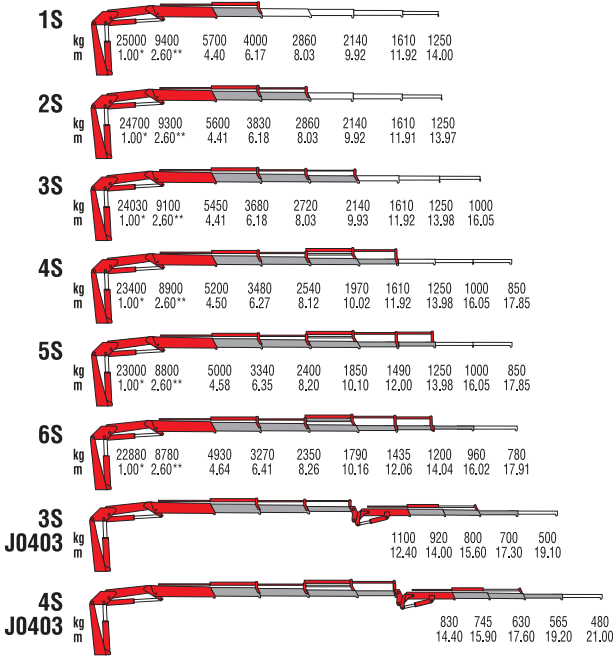
MODELS	LIFTING MOMENT	HORIZ. EXTENSION	MAX. REACH LIFTING CAPACITY	SLEWING ANGLE	WEIGHT	DIMENSION
	tm	m	kg	°	kg	mm
1S	21.4	6.30	3400	387	2570	2520x2330x1005
2S	-	8.21	2535	387	2720	2520x2330x1016
3S	-	10.19	1940	387	2870	2520x2330x1016
4S	-	12.12	1510	387	3010	2520x2330x1016
5S	-	14.21	1175	387	3130	2520x2330x1016
6S	-	16.30	900	387	3250	2520x2330x1016
7S	-	18.40	670	387	3350	2520x2330x1095
8S	-	20.50	500	387	3450	2520x2330x1095
4SJ0902	-	18.50	500	387	3520	2520x2615x1140
4SJ0903	-	20.30	380	387	3610	2520x2615x1140
6SJ0302	-	21.85	420	387	3550	2520x2495x1140



# 825



Only with  
CE or Radio  
version



\*) Theoretical lifting capacity  
 \*\*) Fixed hook capacity

MODELS	LIFTING MOMENT	HORIZ. EXTENSION	MAX. REACH LIFTING CAPACITY	SLEWING ANGLE	WEIGHT	DIMENSION
	tm	m	kg	°	kg	mm
1S	25.0	6.17	4000	400	3020	2500x2320x1115
2S	-	8.03	2860	400	3200	2500x2320x1115
3S	-	9.93	2140	400	3340	2500x2320x1115
4S	-	11.92	1610	400	3500	2500x2320x1115
5S	-	13.98	1250	400	3640	2500x2320x1115
6S	-	16.02	960	400	3735	2540x2320x1200
3SJ0403	-	17.30	700	400	3890	2500x2430x1300
4SJ0403	-	19.20	565	400	4040	2500x2445x1300

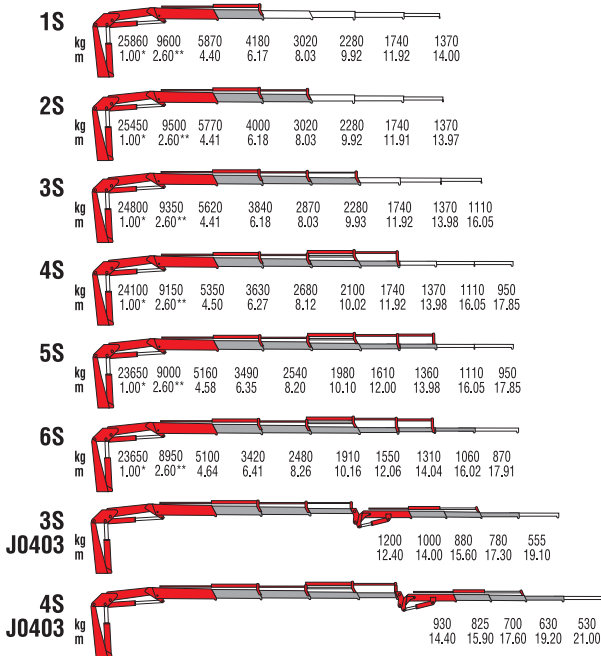


# 828



Only with  
CE or Radio  
version





\*) Theoretical lifting capacity  
 \*\*) Fixed hook capacity

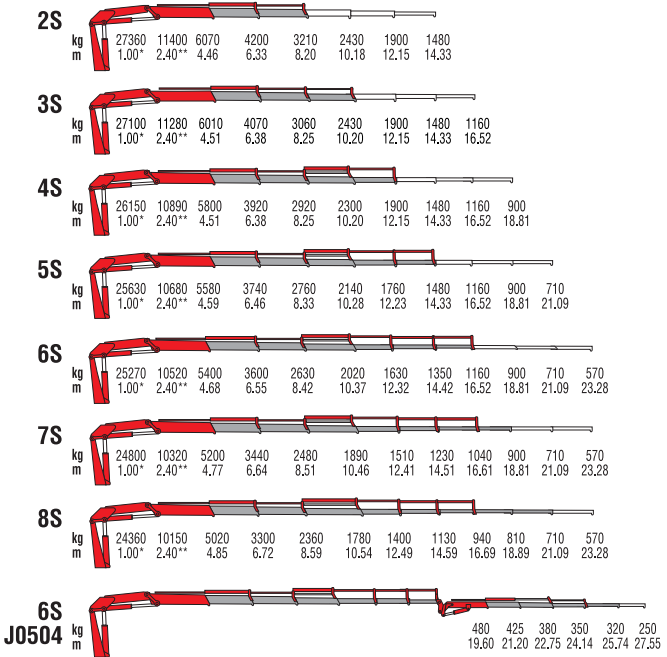
MODELS	LIFTING MOMENT	HORIZ. EXTENSION	MAX. REACH LIFTING CAPACITY	SLEWING ANGLE	WEIGHT	DIMENSION
	tm	m	kg	°	kg	WxHxD
						mm
1S	25.9	6.17	4180	400	3070	2500x2320x1115
2S	-	8.03	3020	400	3250	2500x2320x1115
3S	-	9.93	2280	400	3390	2500x2320x1115
4S	-	11.92	1740	400	3550	2500x2320x1115
5S	-	13.98	1360	400	3690	2500x2320x1115
6S	-	16.02	1060	400	3785	2540x2320x1200
3SJ0403	-	17.30	780	400	3940	2500x2430x1300
4SJ0403	-	19.20	630	400	4090	2500x2445x1300



# 929



Soft Descend Drive



\*) Theoretical lifting capacity

\*\*) Fixed hook capacity

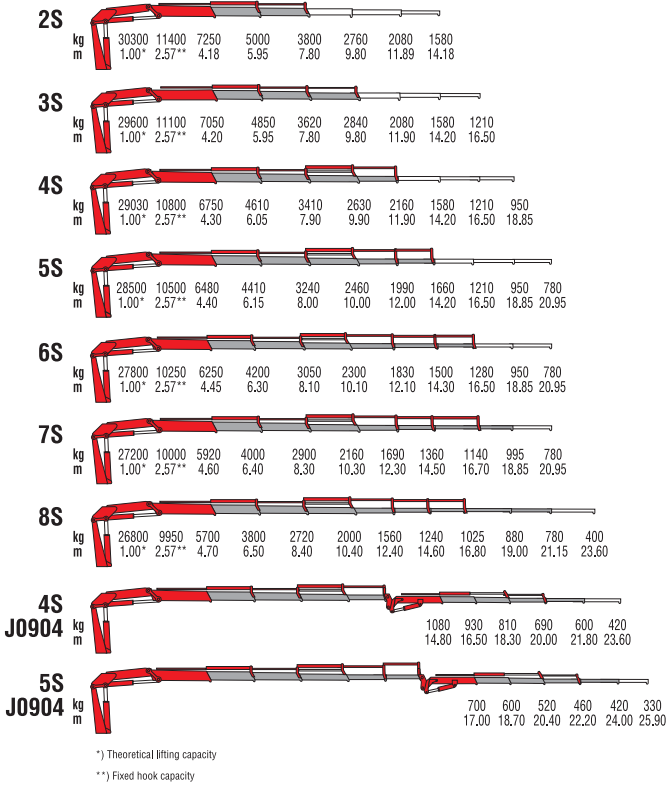
MODELS	LIFTING MOMENT	HORIZ. EXTENSION	MAX. REACH LIFTING CAPACITY	SLEWING ANGLE	WEIGHT	DIMENSION
	tm	m	kg	°	kg	WxHxD
2S	27.4	8.20	3210	425	3105	2510x2350x1010
3S	-	10.20	2430	425	3265	2510x2350x1010
4S	-	12.15	1900	425	3420	2510x2350x1010
5S	-	14.33	1480	425	3560	2510x2350x1040
6S	-	16.52	1160	425	3685	2510x2350x1060
7S	-	18.81	900	425	3800	2510x2350x1160
8S	-	21.89	710	425	3900	2510x2350x1180
6SJ0504	-	25.74	320	425	4260	2510x2705x1190



# 933



Soft Descend Drive

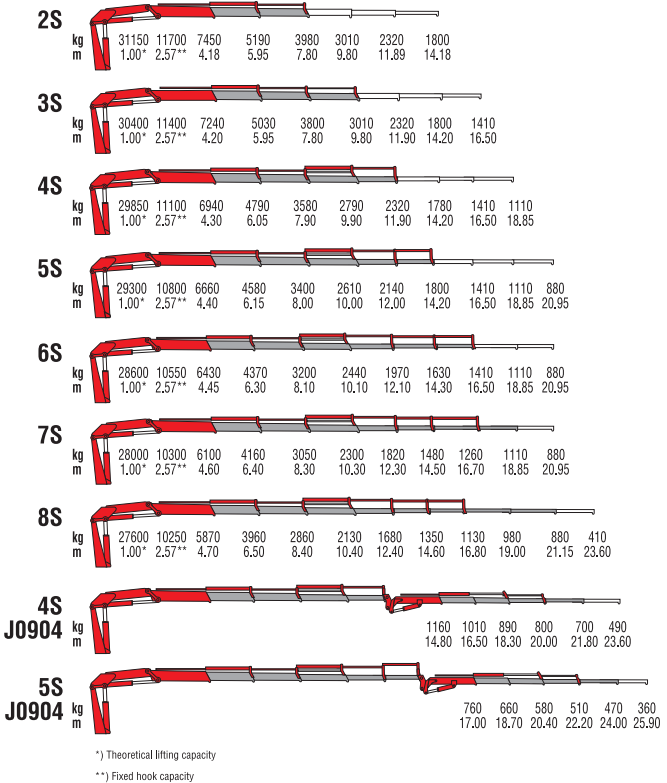


MODELS	LIFTING MOMENT	HORIZ. EXTENSION	MAX. REACH LIFTING CAPACITY	SLEWING ANGLE	WEIGHT	DIMENSION
	tm	m	kg	°	kg	WxHxD
						mm
2S	30,3	7.80	3800	397	3820	2540x2355x1170
3S	-	9.80	2840	397	4040	2540x2355x1170
4S	-	11.90	2160	397	4270	2540x2355x1170
5S	-	14.20	1660	397	4440	2540x2355x1170
6S	-	16.50	1280	397	4600	2540x2405x1170
7S	-	18.85	995	397	4720	2540x2490x1300
8S	-	21.15	780	397	4840	2540x2550x1300
4SJ0904	-	21.80	600	397	5110	2540x2620x1330
5SJ0904	-	24.00	420	397	5280	2545x2620x1330



# 936





MODELS	LIFTING MOMENT	HORIZ. EXTENSION	MAX. REACH LIFTING CAPACITY	SLEWING ANGLE	WEIGHT	DIMENSION
	tm	m	kg	°	kg	WxHxD
2S	31.1	7.80	3980	397	3820	2540x2355x1170
3S	-	9.80	3010	397	4040	2540x2355x1170
4S	-	11.90	2320	397	4270	2540x2355x1170
5S	-	14.20	1800	397	4440	2540x2355x1170
6S	-	16.50	1410	397	4600	2540x2405x1170
7S	-	18.85	1110	397	4720	2540x2490x1300
8S	-	21.15	880	397	4840	2540x2550x1300
4SJ0904	-	21.80	700	397	5110	2540x2620x1330
5SJ0904	-	24.00	470	397	5280	2545x2620x1330



# 946 *Basic*



Soft Descend Drive

# 946 Basic

<b>2S</b>		kg m	21600 2.00*	10000 4.32	7120 6.10	5450 7.95							
<b>3S</b>		kg m	21180 2.00*	9560 4.43	6800 6.20	5180 8.05	4140 10.00	3220 12.00	2530 14.10	2015 16.20			
<b>4S</b>		kg m	20890 2.00*	9180 4.55	6500 6.30	4900 8.15	3880 10.10	3220 12.00	2530 14.10	2015 16.20	1590 18.40		
<b>5S</b>		kg m	20700 2.00*	9000 4.55	6300 6.30	4680 8.15	3650 10.10	2990 12.00	2530 14.10	2015 16.20	1590 18.40	1250 20.60	
<b>6S</b>		kg m	20030 2.00*	8700 4.60	6050 6.35	4470 8.20	3450 10.10	2800 12.10	2330 14.10	2015 16.20	1590 18.40	1250 20.60	1000 22.80
<b>7S</b>		kg m	19620 2.00*	8530 4.60	5860 6.35	4280 8.20	3260 10.10	2600 12.10	2140 14.10	1820 16.20	1590 18.40	1250 20.60	1000 22.80
<b>8S</b>		kg m	19280 2.00*	8200 4.70	5620 6.40	4080 8.30	3080 10.20	2420 12.20	1950 14.20	1640 16.30	1410 18.40	1250 20.60	1000 22.80

\*) Theoretical lifting capacity

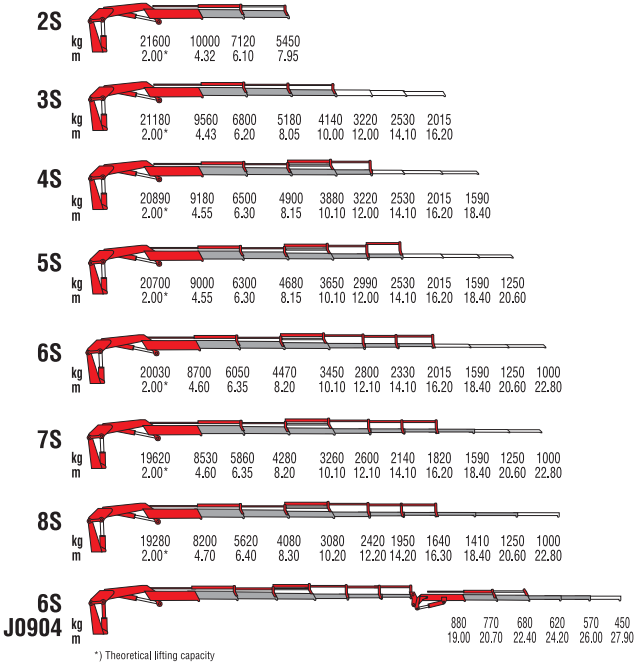
MODELS	LIFTING MOMENT	HORIZ. EXTENSION	MAX. REACH LIFTING CAPACITY	SLEWING ANGLE	WEIGHT	DIMENSION
	tm	m	kg	°	kg	mm
2S	43.2	7.95	5450	400	4540	2503x2460x1275
3S	-	10.00	4140	400	4790	2503x2460x1275
4S	-	12.00	3220	400	5070	2503x2460x1275
5S	-	14.10	2530	400	5310	2503x2460x1285
6S	-	16.20	2015	400	5510	2503x2460x1285
7S	-	18.40	1590	400	5700	2503x2460x1400
8S	-	20.60	1250	400	5880	2509x2480x1400

For non-CE markets only



**946**





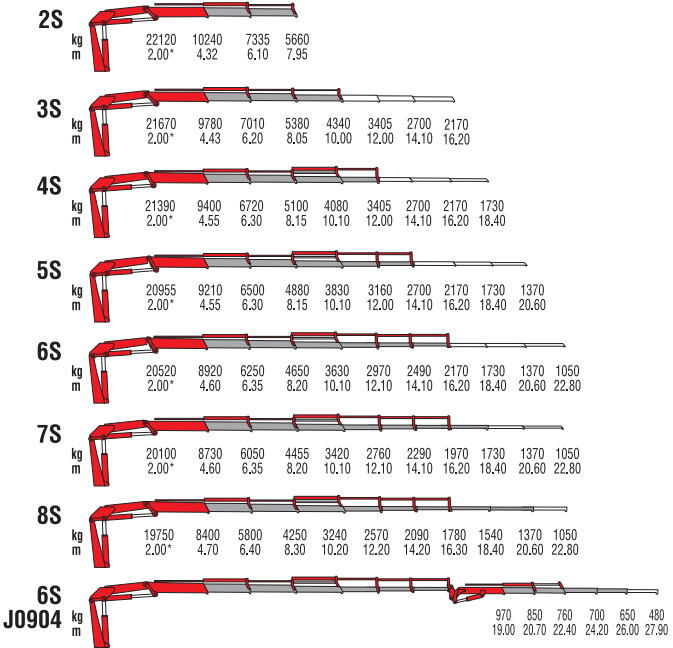
MODELS	LIFTING MOMENT	HORIZ. EXTENSION	MAX. REACH LIFTING CAPACITY	SLEWING ANGLE	WEIGHT	DIMENSION
	tm	m	kg	°	kg	mm
2S	43.2	7.95	5450	400	4540	2503x2460x1275
3S	-	10.00	4140	400	4790	2503x2460x1275
4S	-	12.00	3220	400	5070	2503x2460x1275
5S	-	14.10	2530	400	5310	2503x2460x1285
6S	-	16.20	2015	400	5510	2503x2460x1285
7S	-	18.40	1590	400	5700	2503x2460x1400
8S	-	20.60	1250	400	5880	2509x2480x1400
6SJ0904	-	26.0	570	400	6380	2515x2725x1470



# 950



Soft Descend Drive



\*) Theoretical lifting capacity

MODELS	LIFTING MOMENT tm	HORIZ. EXTENSION m	MAX. REACH LIFTING CAPACITY kg	SLEWING ANGLE °	WEIGHT kg	DIMENSION WxHxD mm
2S	44.2	7.95	5660	400	4580	2505x2460x1275
3S	-	10.00	4340	400	4830	2505x2460x1275
4S	-	12.00	3405	400	5110	2505x2460x1275
5S	-	14.10	2700	400	5350	2505x2460x1285
6S	-	16.20	2170	400	5550	2505x2460x1285
7S	-	18.40	1730	400	5740	2505x2460x1400
8S	-	20.60	1370	400	5920	2510x2480x1400
6SJ0904	-	26.00	650	400	6420	2515x2725x1470



# VR Series

Slewing bearing articulated cranes

**VR75**  
**VR85**



# VR 75



Soft Descend Drive





# VR 85







## 3Technology System Design

- 1 In-line second boom
- 2 High elevation angle
- 3 Smaller installation space required
- 4 Modular frame (103-105)  
(ease of installation)
- 5 Reduced repair cost
- 6 Steel Made in Finland



# 100 Series

3T articulated cranes

**103**

**105**

**108**

**111**

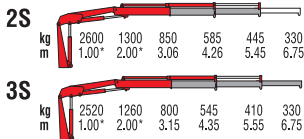
**115**

**120**

**123**



# 103

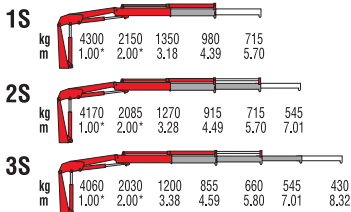


\*) Theoretical lifting capacity

MODELS	LIFTING MOMENT tm	HORIZ. EXTENSION m	MAX. REACH LIFTING CAPACITY kg	SLEWING ANGLE °	WEIGHT kg	DIMENSION WxHxD mm
2S	2.60	5.45	445	370	435	1900x1635x352
3S	-	6.75	330	370	465	1900x1635x352



# 105

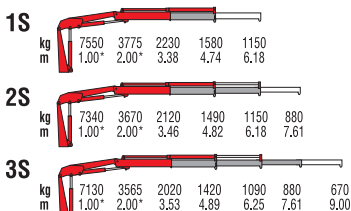


\*) Theoretical lifting capacity

MODELS	LIFTING MOMENT	HORIZ. EXTENSION	MAX. REACH LIFTING CAPACITY	SLEWING ANGLE	WEIGHT	DIMENSION
	tm	m	kg	°	kg	WxHxD
1S	4.30	4.39	980	380	630	2155x1955x420
2S	-	5.70	715	380	680	2155x1955x420
3S	-	7.01	545	380	725	2155x1955x420



# 108

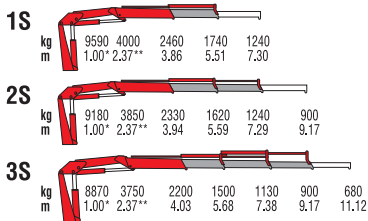


\*) Theoretical lifting capacity

MODELS	LIFTING MOMENT tm	HORIZ. EXTENSION m	MAX. REACH LIFTING CAPACITY kg	SLEWING ANGLE °	WEIGHT kg	DIMENSION WxHxD mm
1S	7.55	4.74	1580	380	845	2320x2030x565
2S	-	6.18	1150	380	905	2320x2030x565
3S	-	7.61	880	380	965	2320x2030x565



# 111



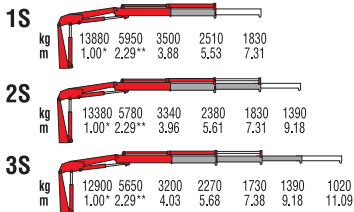
\*) Theoretical lifting capacity

\*\*) Fixed hook capacity

MODELS	LIFTING MOMENT	HORIZ. EXTENSION	MAX. REACH LIFTING CAPACITY	SLEWING ANGLE	WEIGHT	DIMENSION WxHxD
	tm	m	kg	°	kg	mm
1S	9.59	5.51	1740	380	1150	2490x2320x635
2S	-	7.29	1240	380	1250	2490x2320x635
3S	-	9.17	900	380	1340	2490x2320x690



# 115



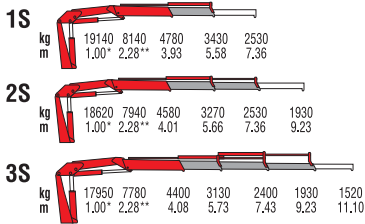
\*) Theoretical lifting capacity

\*\*) Fixed hook capacity

MODELS	LIFTING MOMENT tm	HORIZ. EXTENSION m	MAX. REACH LIFTING CAPACITY kg	SLEWING ANGLE °	WEIGHT kg	DIMENSION WxHxD mm
1S	13.9	5.53	2510	380	1610	2500x2455x820
2S	-	7.31	1830	380	1725	2500x2455x820
3S	-	9.18	1390	380	1830	2500x2455x820



# 120



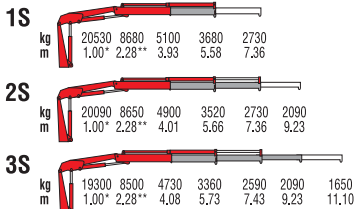
\*) Theoretical lifting capacity

\*\*) Fixed hook capacity

MODELS	LIFTING MOMENT	HORIZ. EXTENSION	MAX. REACH LIFTING CAPACITY	SLEWING ANGLE	WEIGHT	DIMENSION WxHxD
	tm	m	kg	°	kg	mm
1S	19.1	5.58	3430	380	2005	2500x2475x920
2S	-	7.36	2530	380	2140	2500x2475x920
3S	-	9.23	1930	380	2265	2500x2475x920



# 123

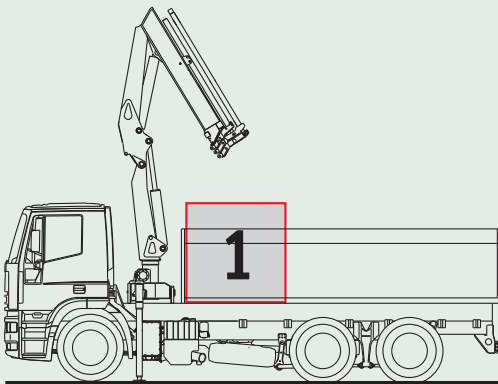


\*) Theoretical lifting capacity

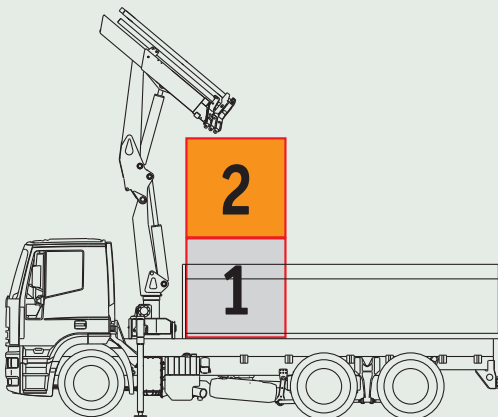
\*\*) Fixed hook capacity

MODELS	LIFTING MOMENT	HORIZ. EXTENSION	MAX. REACH LIFTING CAPACITY	SLEWING ANGLE	WEIGHT	DIMENSION WxHxD
	tm	m	kg	°	kg	mm
1S	20,5	5.58	3680	380	2035	2500x2475x945
2S	-	7.36	2730	380	2170	2500x2475x945
3S	-	9.23	2090	380	2295	2500x2475x945





# Standard



# C Series

# C Series

Compact boom articulated cranes

**810C**

**911C**

**924C**

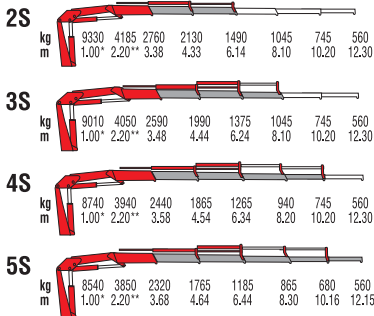
**933C**

**936C**



# 810C


 Only with  
**CE or Radio**  
 version



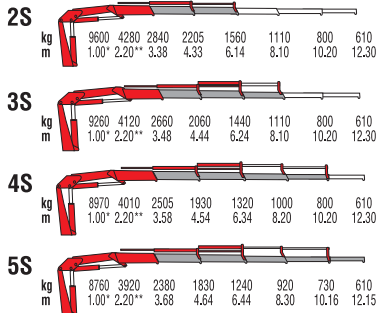
\*) Theoretical lifting capacity

\*\*\*) Fixed hook capacity

MODELS	LIFTING MOMENT	HORIZ. EXTENSION	MAX. REACH LIFTING CAPACITY	SLEWING ANGLE	WEIGHT	DIMENSION WxHxD
	tm	m	kg	°	kg	mm
2S	9.33	6.14	1490	395	1300	2480x2170x640
3S	-	8.10	1045	395	1395	2480x2170x640
4S	-	10.20	745	395	1485	2480x2170x640
5S	-	12.15	560	395	1555	2480x2170x750



# 911C



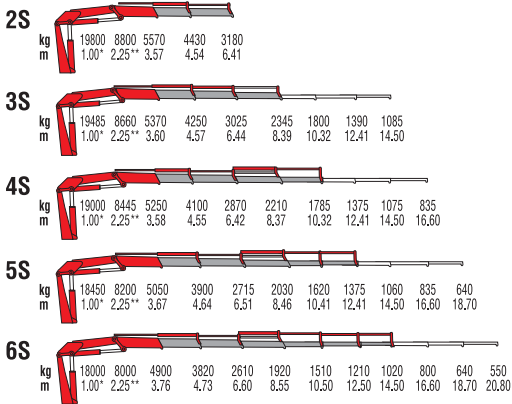
\*) Theoretical lifting capacity

\*\*) Fixed hook capacity

MODELS	LIFTING MOMENT	HORIZ. EXTENSION	MAX. REACH LIFTING CAPACITY	SLEWING ANGLE	WEIGHT	DIMENSION WxHxD
	tm	m	kg	°	kg	mm
2S	9.60	6.14	1560	395	1310	2480x2170x640
3S	-	8.10	1110	395	1405	2480x2170x640
4S	-	10.20	800	395	1495	2480x2170x640
5S	-	12.15	610	395	1565	2480x2170x750



# 924C



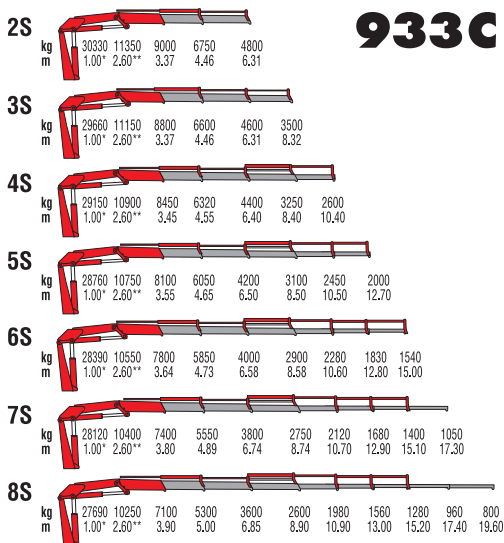
\*) Theoretical lifting capacity

\*\*) Fixed hook capacity

MODELS	LIFTING MOMENT tm	HORIZ. EXTENSION m	MAX. REACH LIFTING CAPACITY kg	SLEWING ANGLE °	WEIGHT kg	DIMENSION WxHxD mm
2S	19.8	6.41	3180	387	2650	2520x2330x1016
3S	-	8.39	2345	387	2800	2520x2330x1016
4S	-	10.32	1785	387	2940	2520x2330x1016
5S	-	12.41	1375	387	3060	2520x2330x1016
6S	-	14.50	1020	387	3180	2520x2330x1016



# 933C



\*) Theoretical lifting capacity    \*\*) Fixed hook capacity

MODELS	LIFTING MOMENT tm	HORIZ. EXTENSION m	MAX. REACH LIFTING CAPACITY kg	SLEWING ANGLE °	WEIGHT kg	DIMENSION WxHxD mm
2S	30.3	6.31	4800	397	3750	2540x2355x1170
3S	-	8.32	3500	397	3970	2540x2355x1170
4S	-	10.40	2600	397	4200	2540x2355x1170
5S	-	12.70	2000	397	4370	2540x2355x1170
6S	-	15.00	1540	397	4530	2540x2405x1170
7S	-	17.30	1050	397	4650	2540x2490x1300
8S	-	19.60	800	397	4770	2540x2550x1300



# 936C



Model	kg	kg	kg	kg	kg	kg	kg	kg	kg	kg	kg	kg	kg	kg	kg	
2S	31000	11530	9200	6950	4980											
	1.00*	2.60**	3.37	4.46	6.31											
3S	30330	11330	9000	6780	4780	3670										
	1.00*	2.60**	3.37	4.46	6.31	8.32										
4S	29770	11100	8630	6500	4570	3400	2750									
	1.00*	2.60**	3.45	4.55	6.40	8.40	10.40									
5S	29390	10900	8280	6220	4350	3250	2600	2150								
	1.00*	2.60**	3.55	4.65	6.50	8.50	10.50	12.70								
6S	29050	10700	7980	6020	4150	3050	2420	1970	1670							
	1.00*	2.60**	3.64	4.73	6.58	8.58	10.60	12.80	15.00							
7S	28800	10550	7580	5720	3950	2900	2250	1800	1520	1120						
	1.00*	2.60**	3.80	4.89	6.74	8.74	10.70	12.90	15.10	17.30						
8S	28350	10400	7270	5460	3750	2740	2100	1680	1390	1060	880					
	1.00*	2.60**	3.90	5.00	6.85	8.90	10.90	13.00	15.20	17.40	19.60					

\*) Theoretical lifting capacity    \*\*) Fixed hook capacity

MODELS	LIFTING MOMENT	HORIZ. EXTENSION	MAX. REACH LIFTING CAPACITY	SLEWING ANGLE	WEIGHT	DIMENSION
	tm	m	kg	°	kg	mm
2S	31.0	6.31	4980	397	3750	2540x2355x1170
3S	-	8.32	3670	397	3970	2540x2355x1170
4S	-	10.40	2750	397	4200	2540x2355x1170
5S	-	12.70	2150	397	4370	2540x2355x1170
6S	-	15.00	1670	397	4530	2540x2405x1170
7S	-	17.30	1120	397	4650	2540x2490x1300
8S	-	19.60	880	397	4770	2540x2550x1300



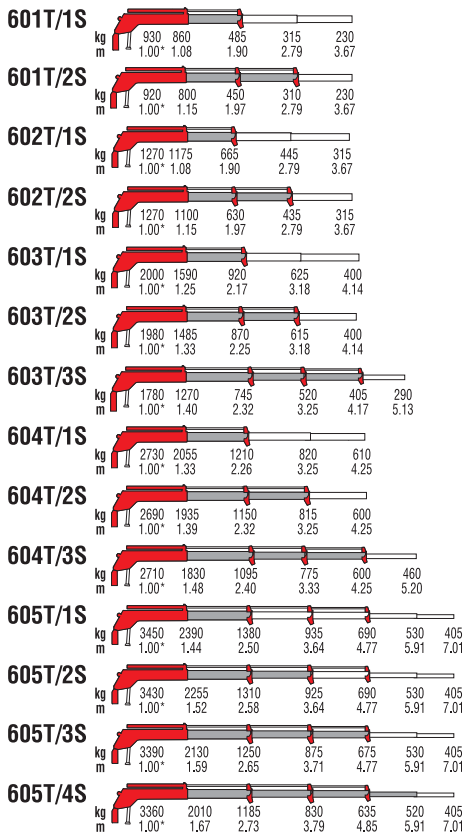


# 600T Series

Compact telescopic boom cranes

601T  
602T  
603T  
604T  
605T





\*) Theoretical lifting capacity

MODELS	LIFTING MOMENT tm	HORIZ. EXTENSION m	MAX. REACH LIFTING CAPACITY kg	SLEWING ANGLE °	WEIGHT kg	DIMENSION WxHxD mm
601T/1s	0.93	1.90	485	328	145	595x1240x370
601T/2s	-	2.79	310	328	164	650x1240x370
602T/1s	1.27	1.90	665	335	174	620x1245x435
602T/2s	-	2.79	435	335	193	675x1245x435
603T/1s	1.99	2.17	920	335	216	695x1525x435
603T/2s	-	3.18	615	335	240	710x1525x435
603T/3s	-	4.17	405	335	262	870x1525x435
604T/1s	2.73	2.26	1210	335	263	730x1590x440
604T/2s	-	3.25	815	335	295	755x1590x440
604T/3s	-	4.25	600	335	321	755x1590x440
605T/1s	3.45	2.50	1380	395	301	980x1705x440
605T/2s	-	3.64	925	395	337	1040x1705x440
605T/3s	-	4.77	675	395	370	1040x1705x440
605T/4s	-	5.91	520	395	399	1040x1705x440

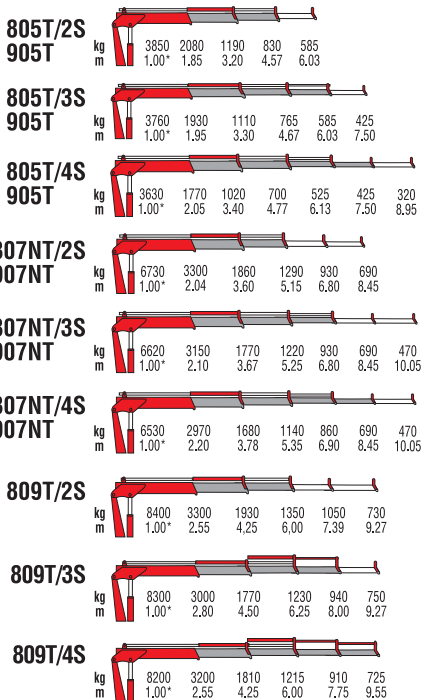


# T Series

Telescopic boom cranes

**805T - 905T**  
**807NT - 907NT**  
**809T**  
**811T**  
**815T**  
**817T**

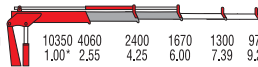




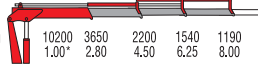
\*) Theoretical lifting capacity

MODELS	LIFTING MOMENT	HORIZ. EXTENSION	MAX. REACH LIFTING CAPACITY	SLEWING ANGLE	WEIGHT	DIMENSION WxHxD
	tm	m	kg	°	kg	mm
805T/2S	3.85	4.57	830	380	690	2085x1855x470
805T/3S	-	6.03	585	380	735	2085x1855x470
805T/4S	-	7.50	425	380	775	2085x1855x470
905T/2S	3.85	4.57	830	380	690	2085x1855x470
905T/3S	-	6.03	585	380	735	2085x1855x470
905T/4S	-	7.50	425	380	775	2085x1855x470
807NT/2S	6.73	5,15	1290	387	880	2300x1995x550
807NT/3S	-	6,80	930	387	940	2300x1995x550
807NT/4S	-	8,45	690	387	1000	2300x1995x550
907NT/2S	6.73	5,15	1290	387	880	2300x1995x550
907NT/3S	-	6,80	930	387	940	2300x1995x550
907NT/4S	-	8,45	690	387	1000	2300x1995x550
809T/2S	8.40	6.00	1350	395	1190	2350x2290x590
809T/3S	-	8.00	940	395	1270	2350x2290x590
809T/4S	-	9.55	725	395	1335	2350x2290x590

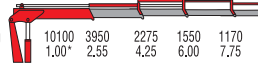


**811T/2S**


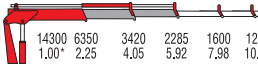
kg	10350	4060	2400	1670	1300	970
m	1.00*	2.55	4.25	6.00	7.39	9.27

**811T/3S**


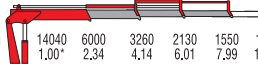
kg	10200	3650	2200	1540	1190	970
m	1.00*	2.80	4.50	6.25	8.00	9.27

**811T/4S**


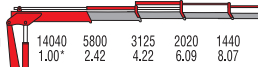
kg	10100	3950	2275	1550	1170	940
m	1.00*	2.55	4.25	6.00	7.75	9.55

**815T/2S**


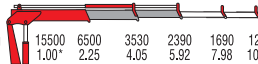
kg	14300	6350	3420	2285	1600	1200	930
m	1.00*	2.25	4.05	5.92	7.98	10.05	12.24

**815T/3S**


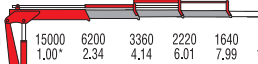
kg	14040	6000	3260	2130	1550	1160	890	720
m	1.00*	2.34	4.14	6.01	7.99	10.05	12.24	14.35

**815T/4S**


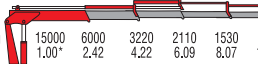
kg	14040	5800	3125	2020	1440	1125	880	700
m	1.00*	2.42	4.22	6.09	8.07	10.05	12.24	14.34

**817T/2S**


kg	15500	6500	3530	2390	1690	1290	1000
m	1.00*	2.25	4.05	5.92	7.98	10.05	12.24

**817T/3S**


kg	15000	6200	3360	2220	1640	1240	970	790
m	1.00*	2.34	4.14	6.01	7.99	10.05	12.24	14.35

**817T/4S**


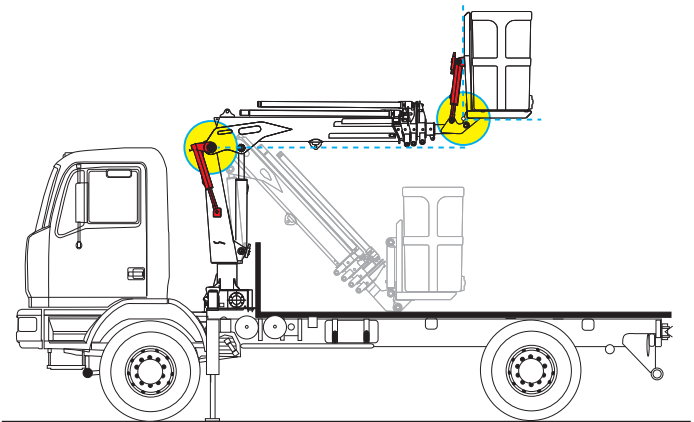
kg	15000	6000	3220	2110	1530	1200	950	770
m	1.00*	2.42	4.22	6.09	8.07	10.05	12.24	14.34

\*) Theoretical lifting capacity

MODELS	LIFTING MOMENT	HORIZ. EXTENSION	MAX. REACH LIFTING CAPACITY	SLEWING ANGLE	WEIGHT	DIMENSION
	tm	m	kg	°	kg	WxHxD
						mm
811T/2S	10.3	6.00	1670	395	1190	2350x2290x590
811T/3S	-	8.00	1190	395	1270	2350x2290x590
811T/4S	-	9.55	940	395	1335	2350x2290x590
815T/2S	14.3	5.92	2285	380	1560	2480x2490x780
815T/3S	-	7.99	1550	380	1690	2480x2490x780
815T/4S	-	10.05	1125	380	1800	2500x2490x780
817T/2S	15.5	5.92	2390	380	1610	2480x2490x780
817T/3S	-	7.99	1640	380	1740	2480x2490x780
817T/4S	-	10.05	1200	380	1850	2500x2490x780



Thanks to the special "self-aligning" balancing system, the position of the basket is always horizontal without any intervention from the user.



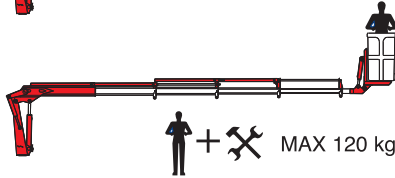
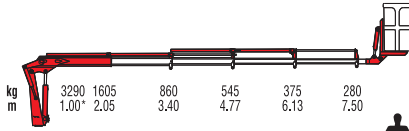
# **AERO Series**

Aerial basket cranes

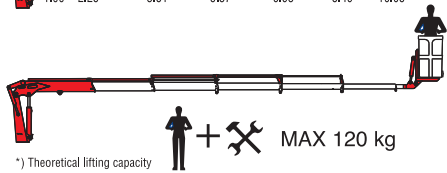
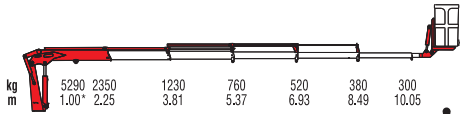
**805T - 905T  
807NT - 907NT**



## 805T - 905T



## 807NT - 907NT



\*) Theoretical lifting capacity

MODELS	LIFTING MOMENT	HORIZ. EXTENSION	MAX. REACH LIFTING CAPACITY	SLEWING ANGLE	WEIGHT	DIMENSION WxHxD
	tm	m	kg	°	kg	mm
805T-905T	3.3	7.50	280	380	940	3305x1940x850
807NT-907NT	5.3	10.05	300	387	1260	3765x2080x850



# Single hand proportional system

Single-handed control of every  
crane function

Proportional speed control  
of any single movement

Stabilizer control by radio



Function selection



Proportional speed  
control



*Compact dimensions  
and reduced weight*

# Radio remote controls

The operator can control the crane with high precision proportional levers in every position and, doing so, can supervise the loading and unloading operations.

That means a great time saving and higher safety. The operator can also control the truck engine start, stop and accelerator with the remote control.

All AMCO VEBA remote controls have an identification code and are shielded from electro-magnetic fields and from external radio signals.



Hetriconic "Single Hand"



Scanreco



Hetriconic (Not CE)



Hetriconic CE Basic



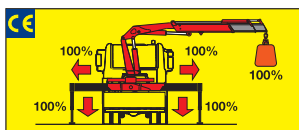
Hetriconic CE Graphic



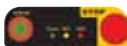
4" TFT HD-color display to keep the crane always under control

# Stability control systems (CE)

## S System

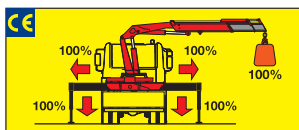


The **S System** integrated in the load limiting device checks the stabilizers' positions. Only when all beams are fully open and all stabilizers are on the ground the crane can operate and lift loads.



Control display

## M System

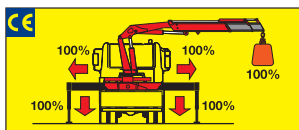


The **M System** integrated in the load limiting device checks the stabilizers' positions. Only when all beams are fully open and all stabilizers are on the ground the crane can operate and lift loads.



Control display

## ML System



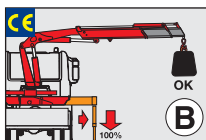
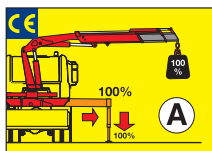
The **ML System** integrated in the load limiting device checks the stabilizers' positions. Only when all beams are fully open and all stabilizers are on the ground the crane can operate and lift loads.



Control display



## L System



The **L system** checks the stabilizers' positions and the truck's inclination.

According to the beams' positions, the system allows two operating modes:

**Mode A** - all beams fully open and all stabilizers feet on the ground.

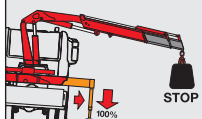
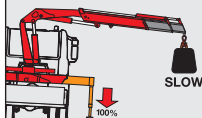
**Mode B** - stabilizers on the ground only.

**In mode A:** the load limiting device stops the crane when the crane reaches 100% of the nominal capacity.

**In mode B:** a dedicated sensor monitors the truck's inclination. The load limiting device stops the crane before it reaches an inclination angle dangerous for stability, or when the crane reaches its nominal capacity.

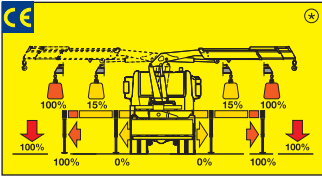


Control display

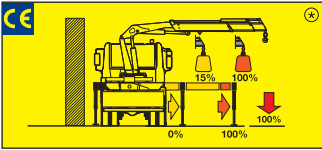


# Stability control systems (CE)

## XL System



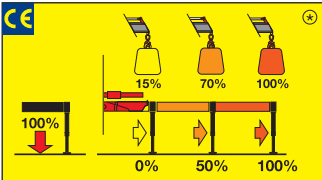
The **EBB** monitors for 2 possible beams' positions: fully open and not fully open. Depending on the position of the beams and the stabilizers, the crane's lifting capacity changes according to the setting made by the installer. The crane can be used even with a beam partially or fully retracted without having stability problems.



## Optional RCS

The **Rotation Control Sensor** constantly checks the slewing position of the crane and limits the lifting capacity depending on the beams' and the stabilizers' positions.

## 2XL System



The **EBB** checks the positions of the stabilizers and divides the working area into 4 slewing sectors: over the cabin, right side, left side and the rear of the vehicle. Depending on the position of the beams and the stabilizers, the crane's lifting capacity changes according to the settings made by the installer. The crane can be used even with a beam partially or fully retracted without having stability problems.



The **PES** (Proportional Encoder Sensor) recognizes 3 positions of the stabilizer's beams: fully open, half extended, fully closed.



The **RCS** (Rotation Control Sensor) recognizes 4 slewing sectors.

The **CAN-BUS** radio-control allows the operator to know the positions of the stabilizers and the loading conditions of the crane.



With manual opening stabilizers, the 2XL System only recognizes completely open or completely closed beam positions.

⊕ The percentages present in the pictures are merely examples and they have no bearing on the crane's real lifting capacities. The crane's real lifting capacities will depend on truck's stability.

Models	NO RRS				RRS		
	S	M	XL	2XL	ML	L	2XL
803N-903N							
804-904							
805-905		■			■	OPTIONAL	
806N-906N			■		■	OPTIONAL	
807N-907N			■		■	OPTIONAL	
808N-908N			■				■
810			■				■
812			■				■
815			■				■
817			■				■
823			■				■
825			■				■
828			■				■
911							■
924			■				■
929				■			■
933				■			■
936				■			■
946 BASIC							
946							■
950							■
VR75							
VR85							■
103							
105		■					
108		■					
111		■					
115		■					
120		■					
810C			■				■
911C							■
924C			■				■
933C				■			■
936C				■			■
601T							
602T	■				■	OPTIONAL	
603T	■				■	OPTIONAL	
604T	■				■	OPTIONAL	
605T	■				■	OPTIONAL	
805T-905T		■			■	OPTIONAL	
807NT-907NT			■		■	OPTIONAL	
809T			■				■
811T			■				■
815T			■				■
817T			■				■



# EBB

## Electronic Black Box



AMCO VEBA has designed this control motherboard to ensure an effective and reliable control of the crane in every working condition.

The operator can read on the display all informations about the state of the crane, of the accessories and of the routine maintenance.

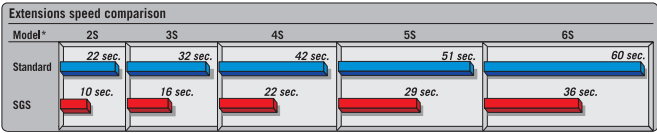
All components are designed according to automotive industry stds. and ensure the highest reliability.

# SGS

## Sprint Generation System



The purpose of SGS system is to increase the extensions speed without affecting the crane safety.



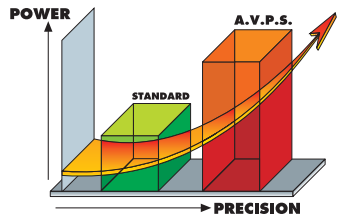
\*1 model of reference: 820

# AVPS

## Amco Veba Power System



AVPS system can reach longer outreach with very heavy load, with the highest precision.



# SDD

## Soft Descend Drive



The SDD system is designed to reduce the oscillations and ensure a perfect control of the motions.







Data, descriptions, and illustrations pertain only and uniquely to models sold at the time of printing of this brochure. After the date of printing, this information is purely indicative and not binding upon Amco Veba. Future modifications are solely at the discretion of Amco Veba and are always in compliance with applicable and pertinent safety standards. To obtain updated data, descriptions, and illustrations, contact the manufacturer or your reseller. Cranes manufactured and/or marketed by Amco Veba.





**AMCO / VEBA**  
A HYVA GROUP COMPANY

DEALER



Via Einstein, 4  
42028 Poviglio (RE) Italy  
Tel. +39 0522 40.80.11  
Fax +39 0522 40.80.80  
info@amcoveba.it  
commerciale@amcoveba.it  
www.amcoveba.com

