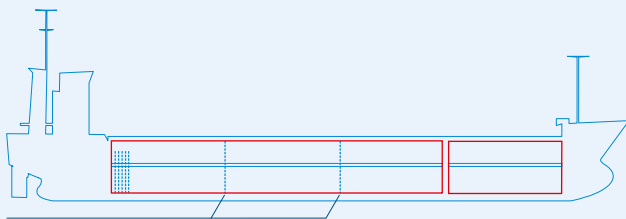
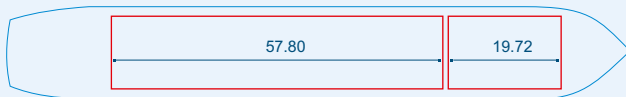


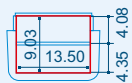
MV KIMBERLY



2 removable bulkheads
 14 tweendeck pontoons



Capacities stated in this list are based on averages.
 Particulars believed to be correct but not guaranteed.



Built:	2008
Shipyard:	Tianjin Xinhe Shipbuilding Heavy Industry Co Ltd, Tianjin, China
Call sign:	V2DK3
IMO No:	9378242
Type:	Multipurpose Dry Cargo and Container Carrier Tweendecker
Flag:	Antigua & Barbuda
Ice class:	1A
DWAT:	7322 mt
GT:	5261
NT:	2382
Length over all:	115.50 m
Breadth over all:	16.50 m
Moulded depth:	7.95 m
Draft:	6.28 m
2 Hatches (L x W x H):	57.81 x 13.50 m 19.72 x 13.50 m
2 Holds (L x W x H):	57.81 x 13.50 x 9.05 m 19.72 x 13.50 x 9.05 m
Hold Capacity (grain):	324000 cbft / 9173 cbm
TEU:	332
Main Engine:	MaK 8M32C, 3840 kW
Speed:	11.0 knots
Phone on board:	+372 5353 1845