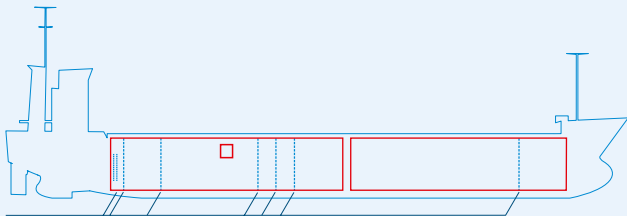
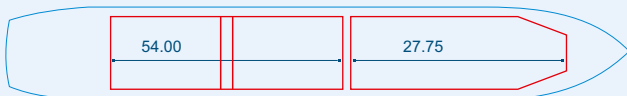


MV KIRKE



Two removable bulkheads, hold 1 and/or hold 2



Capacities stated in this list are based on averages.
 Particulars believed to be correct but not guaranteed.



Built:	2007
Shipyard:	Bodewes Shipyard B.V. Hoogezand, the Netherlands
Call sign:	V2RA4
IMO No:	9413456
Type:	Multipurpose Dry Cargo and Container Carrier
Flag:	Antigua & Barbuda
Ice class:	
DWAT:	7948 mt
GT:	4968
NT:	2648
Length over all:	118.55 m
Breadth over all:	15.20 m
Moulded depth:	8.45 m
Draft:	7.05 m
2 Hatches (L x W):	27.75 x 12.65 m 54.00 x 12.65 m
2 Holds (L x W x H):	27.75 x 12.65 x 9.45 m 54.00 x 12.65 x 9.45 m
Hold Capacity (grain):	332500 cbft / 9415 cbm
TEU:	362
Main Engine:	MaK 8M32c 3840 kW
Speed:	13 knots
Phone on board:	+372 5854 3199