

HermanMiller Thrive™ Ergonomic Portfolio





Welcome to a Healthier Workplace

Outfit an office that's good for people and your business with the Thrive Ergonomic Portfolio. With our ergonomic expertise and research-based products, we'll help you shape a workplace where it's easier for people to be healthy, productive, and engaged.

We understand how people think, what their bodies need to stay comfortable, and their need for both privacy and interaction. With the diverse products in the Thrive Ergonomic Portfolio, you have options for outfitting an entire office with spaces that will help people work better, and feel good doing it. It's how we help you create an office where everyone can thrive.

Everybody's Human

At Herman Miller, we spend a lot of time exploring the relationship between people's experiences in the workplace and their fundamental human needs. In addition, we research the sociology of work—how people affect the work environment, and how the work environment affects people. We use this knowledge to help organizations and their design partners create workplaces where every tool and furnishing feels right.



Physical

Is work taking a toll on your body? Eighty percent of all office workers who have back pain during their careers emphatically say yes. We believe it's because most work environments aren't designed to fully support people's bodies, tools, and tasks. Consider a high-performance work chair that engages the lower back and prevents fatigue or a sit-to-stand desk that encourages healthy transitions between sitting and standing. Add a monitor arm that positions the screen in the most comfortable viewing position.



Cognitive

What's on your mind? Grocery lists. Vacations. Lunch. With everything people have going on, it's easy to be distracted and emotionally drained. It's even easier to feel this way in a meeting where the person sitting at the head of the table is blocking the main display. When people can't see the information being presented on screen, they have difficulty concentrating. This can lead to anxiety, especially when the information being presented is critical to one's job. A simple fix? Eliminate the chair from the head of the table, and eliminate the physical barrier inhibiting everyone's ability to process information.



Social

Are you a people person? For the majority of us, the answer is yes—and no. Most of us seek to balance our need for privacy with our need to be with others. We also have different requirements for the amount of space between us and other people as we interact—requirements that can vary among cultures. The most effective office environments acknowledge that different types of work require different types of settings where people can work naturally, both together and alone.

Good for People. Good for Business Too.

When you give people the support their bodies need to thrive, you'll help your business thrive too. Research shows that incorporating best practices for physical, social, and cognitive ergonomics and taking a proactive approach to employee wellness can make a measurable difference in what companies spend on healthcare and workers' compensation each year.

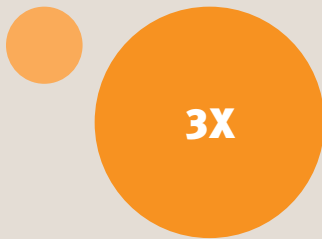
For the past 10 years, the total cost of medical expenses for low-back pain in the United States has exceeded \$100 billion per year.

↑ \$100 B

Eight out of 10 workers experience back pain at some point in their careers.



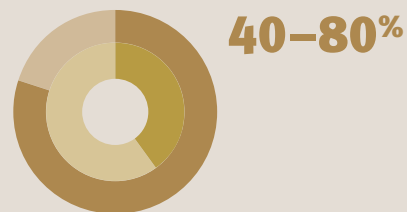
At age 60, our eyes need three times as much light to see as they did at 20.



Percentage of adults who experience eyestrain due to electronics use.



The prevalence of work-related musculoskeletal disorders is reported to be 40–80% among computer users.



91% of all computer users suffer from eyestrain, and computer vision syndrome affects nearly 66 million people.



32% of employers say arthritis and back problems negatively impact health insurance plans—third after diabetes and cancer.

32%



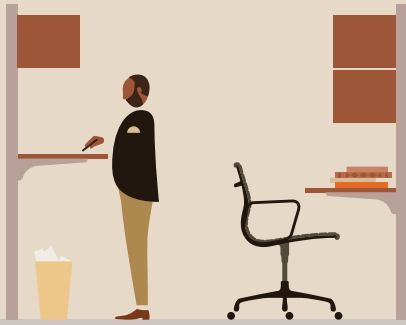
For every dollar invested in an ergonomic intervention strategy in an office environment, there is a return of \$17.50.

+ \$17.50

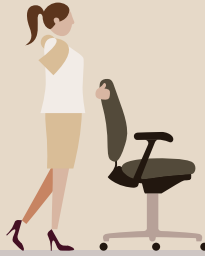
Leading the Way in Wellness and Productivity for Over 50 Years

The Thrive Ergonomic Portfolio comes from a long line of innovators, design experts, and award winners. Years of studying how people work have produced a string of firsts that help people feel better and work better. And there are plenty more where those came from.

1964
Action Office®, designed for variations in posture, offers the world's first sit-to-stand product.



1976
Designer Bill Stumpf introduces ergonomics to the contract furniture industry. It's no wonder we named his first chair Ergon®.



1991
Herman Miller becomes a charter member of the Office Ergonomic Research Committee.



1991
Wishbone®, the first flat-screen monitor arm in the world, arrives on the market.



2013
By applying a deeper understanding of what makes us human, Living Office® delivers a more natural and desirable experience of work for people.



2014
Mirra® 2 redefines dynamic support with the Butterfly Back™, which merges flexible fabric with polymer veins.



2015
Renew™ Link's trapezoid work surface reduces the distraction caused by awkward sightlines typical of benching.



1994

Aeron® (IDSA's Design of the Decade) is the first work chair to use non-foam fabric.



2002

PostureFit® revolutionizes the industry, supporting the base of your spine to hold your back in healthy seated alignment.



2008

Embody® becomes the first work chair designed to create harmony between a person's body and their technology.



2010

Flo® (Red Dot Award) becomes one of the world's first monitor arms to support progressive lens users and touch screens.



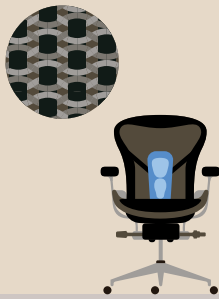
2015

Exclave™ is the first comprehensive suite of products to address the physical, psychological, and social aspects of collaborative work.



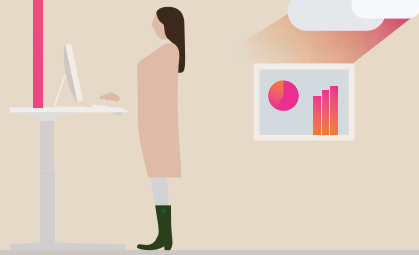
2016

Aeron is remastered for today's work, workers, and work settings, including an exclusive, adjustable version of PostureFit and advanced 8Z Pellicle™ suspension material.



2017

Live™ OS is a system of cloud-connected furnishings, user app, and organizational dashboard. Paired with high-performance work chairs and height-adjustable desks, Live OS helps people stay active and healthy at work.



2018

Cosm™ instantly responds to your body, movement, and posture to provide natural balance and support. Its Auto-Harmonic Tilt, Intercept suspension, and flexible frame work together to give you a feeling of weightlessness, anywhere you work.





High-Performance Work Seating

Three Innovations for Sitting Well

We've been thinking about how to keep people comfortable at work for more than 60 years. We know that to deliver the best experience for people at work, a space and the products in it must support people as they think, move, and interact.

That's why we continue to build on what we know about the cognitive, physical, and social needs all people have. Every new discovery in health science, human behavior, and technology advances our thinking and our products.

This research culminates in high-performance work chairs that empower the body, so people stay comfortable as they work. While each of our chairs are uniquely suited to different tasks, all our high-performance work chairs help people think, create, and share ideas through three shared strands of DNA—Natural Balanced Movement, Total Spinal Support, and Dynamic Fit.

Natural Balanced Movement

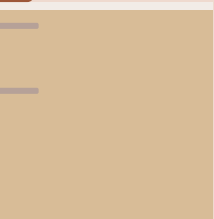
Our chairs move in tandem with you, through any change in position, keeping your entire body stress-free.

Total Spinal Support

When your body is properly supported as you sit, you have the strength you need to stay comfortable and injury-free as you work.

Dynamic Fit

Herman Miller's high-performance work chairs are designed to support you through all your twists and turns, no matter the shape or size of your body.





Embody Chair

Designed by Bill Stumpf and Jeff Weber

Embody is the only chair that actually improves your health while you sit. Designed for long-term sitting, Embody offers a completely customizable fit, distributing your weight appropriately with Pixelated Support while the back flexes to support your body's micro-movements. The Embody tilt and kicker provides natural, balanced motion through a range of posture changes. And the chair's Backfit™ adjustment allows you to position the backrest so you achieve a neutral, balanced posture based on your unique spinal curvature.



Also shown: Ubi™ Work Tools; Pari™ Screens



Aeron Chair

Designed by Bill Stumpf and Don Chadwick, 1994

Remastered by Don Chadwick, 2016

The most recognized and admired office chair in the world, Aeron offers revolutionary ergonomic support for the widest range of shapes and sizes. Its iconic design—an industry benchmark for ergonomics since 1994—remains largely unchanged but was remastered in 2016. Aeron now offers smarter weight distribution and suspension through 8ZPellicle, and adjustable PostureFit SL™, creating total spinal support based on Herman Miller’s latest research on the science of sitting, advancements in materials, manufacturing and technology, and today’s world of work.





Cosm Chair

Designed by Studio 7.5

As people enjoy the freedom that a more varied, flexible work environment affords—moving from individual workpoints to communal settings to more formal meetings—consistent ergonomic support is lacking. Cosm offers exactly this consistency through unparalleled movement, comfort, and performance. Its sophisticated ergonomic design instantly responds to your body, movement, and posture to provide natural balance and total support. No matter who sat in the chair before you, how long you'll be in it, or what you'll be doing, Cosm gives you a new experience of comfort—anywhere you work.

Mirra 2 Chair

Designed by Studio 7.5

Embracing the athletic attitude of today's knowledge worker, Mirra 2 offers sitters a winning combination of simplicity, flexibility, and personalized ergonomics. The lightweight design is ideal for settings where agility is key and the ultra-responsive materials enable you to shift seamlessly between focused and collaborative work. The seat and back adapt to you with a smooth, balanced feel as you recline, thanks to the Harmonic 2 Tilt. With dynamic surfaces that respond to your slightest movements and simple, intuitive adjustments to fine-tune the fit, Mirra 2 balances immediate comfort and personalized ergonomics in one sophisticated design.







Celle® Chair
Designed by Jerome Caruso

Expectations are high for work chairs—and in places where different people use the same chair successively, around the clock, they're even higher. Celle's dependable, hardworking design stands up to heavy use, even in the most demanding environments—from call centers to nurses' stations, conference areas to laboratories. Celle's patented Cellular Suspension™ conforms to your unique shape and stature and the PostureFit sacral support is designed to maintain proper spinal alignment. As you lean back, Celle's patented Harmonic Tilt prevents your lower back from pulling away from the backrest, keeping you balanced and supported as you move naturally.





Sayl® Chair

Designed by Yves Béhar

Designed to make a statement, Sayl delivers a high degree of ergonomic support through a distinctive, dematerialized design. Inspired by suspension bridges—structures that deliver the most using the least material—Sayl’s 3D Intelligent® suspension back lets you stretch and move, striking a healthy balance between support and freedom. Sayl’s stretch knit back cover provides a touch of warmth and a softer aesthetic while maintaining the beauty of the signature 3-D suspension back. Available in an expressive palette, the knit back adds visual interest while providing plenty of options to personalize your chair.

Lino™ Chair

Designed by Sam Hecht & Kim Colin

With a harmonious blend of performance essentials and authored design at an unexpected price point, Lino brings uncompromising comfort and style to any space. Lino offers PostureFit, which supports your spine and reinforces your pelvis, and a few different arm options, which were carefully considered, smartly mimicking yours: wider at the elbow and slimmer at the wrist. A broad material and color selection gives people a highly customizable chair.





Verus™ Chair

Redefining what an affordable work chair should be, Verus offers long- and short-term comfort and proper ergonomic support. Our patented PostureFit sacral support is standard in Verus and keeps the spine properly aligned. By simplifying the chair's form, using materials in a thoughtful way, and leaning on more than 40 years of experience supporting sitters of all types, we're giving everyone a seat at Herman Miller's work seating table.

Setu® Chair

Designed by Studio 7.5

The Setu chair was created for how you work and live now. Its innovative Kinematic Spine™ bends and flexes to your every move without the need for adjustment. Its finely tuned fabric provides superior suspension and conforms to your body's contours. All you need to do is sit down: you and the chair move as one. With minimal components, the result is a dematerialized design that is lightweight and easy to use in virtually any space.







Performance Desks and Tables

A Healthier Way to Work

Supporting your body as you move is a concept we defined and designed in every one of our work chairs. Our performance tables, desks, and benches encourage a different kind of movement—from sitting to standing—as they support whatever you're doing. Combined with a great chair, these versatile work surfaces give you a full range of movement to help you stay more active and healthier while you work.





Also shown: Aeron Chair, p. 14; Wishbone Dual Bar Monitor Arm, p. 62; Pari Screens



Renew Link

Designed by Brian Alexander

Renew Link makes benching better, helping organizations condense their real estate footprint while improving employee health and focus. Cables are accessible but concealed from view and distractions are kept at bay with open sightlines, thanks to the positioning of the work surfaces. By accommodating both sitting and standing work postures, Renew Link brings a new level of individual choice to shared work environments.

Nevi[®] Link

Designed by Brian Alexander

Fit more people into your office without sacrificing their comfort with Nevi Link. These height-adjustable benches encourage regular movement and condense your real estate footprint through a streamlined design. You can scale to any application with multiple configurations and options for cable management and accessories. It's how we're helping you create an active and efficient office and a healthy bottom line.









Renew Sit-to-Stand Tables

Designed by Brian Alexander

Renew Sit-to-Stand Tables make moving from sitting to standing—and back again—a natural part of your day. Combined with a great chair, it gives you a full range of supported movement to help you stay more active and healthy while you work. A soft, paddle-shaped switch activates the powered height adjustment over a range of 27 to 46 inches high. Softly angled corners under the table protect your knees from bumps and bruises and encourage movement. A seamless wire management design routes the cords from all of your desktop tools into a cable trough below the table, keeping them out of sight even when the table is raised.

Motia® Sit-to-Stand Tables

Our bodies aren't designed to stay in one position. We were made to move. Designed with quality, minimal materials, and available in various finishes, Motia makes height adjustability easy to afford, easy to use, and easy to integrate—in any setting. Moving with workers and their workflow, Motia enables a smooth transition between sitting and standing. The rectangular-top surface, with its electric lift, can handle up to 250 pounds. Motia puts people and workplaces in motion.







Nevi Sit-to-Stand Tables

We think people should be able to sit—and stand—comfortably. Enter Nevi Sit-to-Stand Tables: height-adjustable tables that enhance your people's wellness. With the efficiently designed Nevi, you don't have to choose between getting desks or ergonomic office chairs or accessories—you can have it all. Nevi encourages regular movement between postures for better energy and productivity, and is available in refined, timeless finishes that harmonize with the entire Herman Miller portfolio.





Exclave

Designed by Gianfranco Zucchi and Continuum

Exclave helps people participate more fully in the work of solving problems and generating ideas. It's a thoughtfully cohesive suite of products—from boards that stack, to carts that move them, to tables and rail-hung tools that get everyone involved. Together, these products help people and teams collaborate to develop and share their work more fluidly and spontaneously across the office landscape.

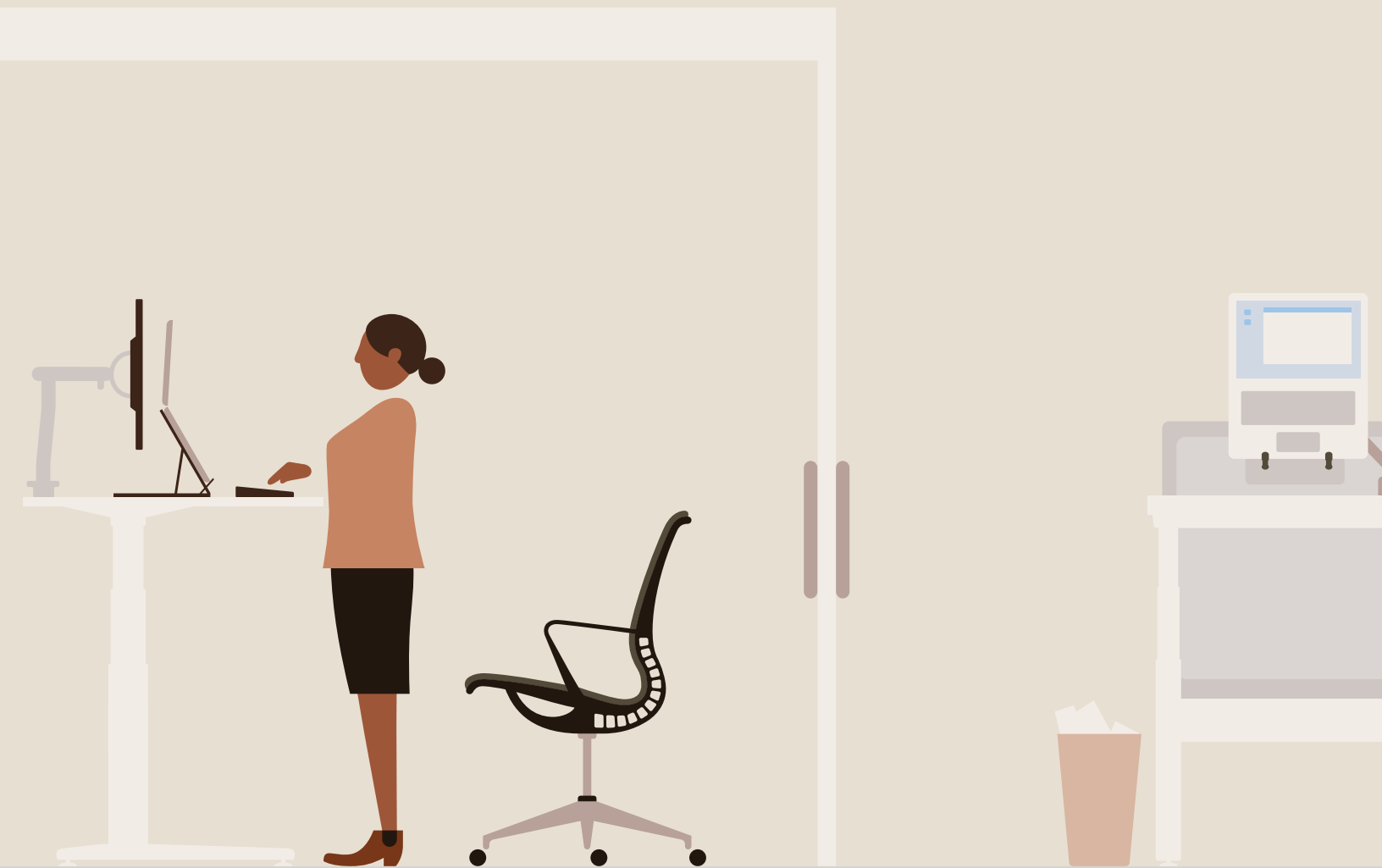
Everywhere™ Tables
Designed by Dan Grabowski

Two traits give these tables their anywhere versatility. Fine lines—a refined, single aesthetic means they complement any space, bringing unity and visual calm. And no boundaries—a simple kit of top shapes and leg styles can be combined in nearly limitless ways. If these choices aren't enough for you, feel free to create your own; Everywhere Tables are easy to customize.

Choose from multiple top shapes, leg styles, and finishes for a custom look. Tables are also available with casters, so you can rearrange them quickly, and flip tops, so you can nest tables and store them efficiently.



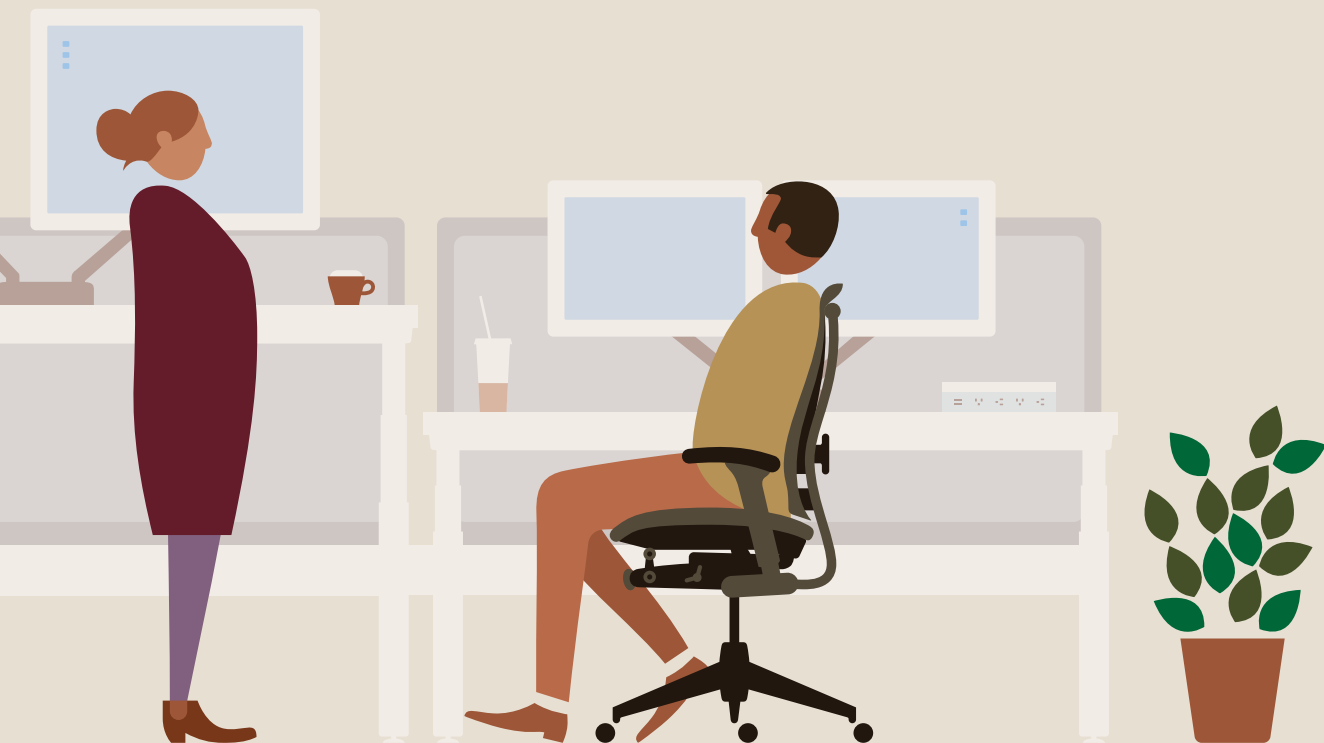




Technology Support

Technology That Works for You

Technology, beyond helping us do our work, can have a positive effect on our physical health, mental processes, and interactions with others. Essentials like adjustable monitor arms and keyboard supports keep our bodies and our tools in harmony even as we change postures.



Ollin Monitor Arms

Designed by Colebrook Bosson Saunders

As technology advances, devices become lighter and more compact. With the Ollin Monitor Arm, you can support a range of monitors and laptops of various weights. The arm has a wide range of motion, allowing you to position screens wherever makes you most comfortable, encouraging a healthier posture whether you're sitting or standing.

Ollin

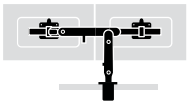


1 Monitor



1 Laptop

Ollin Dual



2 Monitors





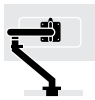
Flo Monitor Arms

Designed by Colebrook Bosson Saunders

The range of motion and fluid, intuitive adjustments of the award-winning Flo are unsurpassed. Its patented geometric spring technology and dynamic fingertip control let you put your screen exactly where you want it with minimum effort and maximum precision. Unlike other products on the market, it supports everyone's eyes, even those with progressive lenses.

Flo effortlessly rotates between portrait and landscape orientations and, because of its patented geometric spring technology, holds any position. It also mounts to most vertical or horizontal surfaces and allows easy installation/removal of monitors.

Flo

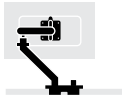


1 Monitor

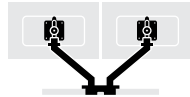


1 Laptop

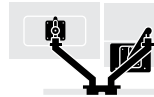
Flo Dual



1 Monitor



2 Monitors, 22" or smaller



1 Monitor, 1 Laptop

Flo Plus Monitor Arm

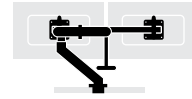
Designed by Colebrook Bosson Saunders

A heavy-duty version of the award-winning Flo Monitor Arm, Flo Plus offers smooth, intuitive adjustment of monitors or all-in-one computers ranging from 20 to 40 pounds.

It uses Flo's patented geometric spring technology for effortless adjustment to any position (landscape or portrait). Mounting and installing or removing monitors is simple and you can easily convert to support two monitors.



1 Monitor or All-in-Ones



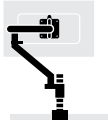
2 Monitors



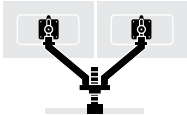


Flo Modular Monitor Arm
Designed by Colebrook Bosson Saunders

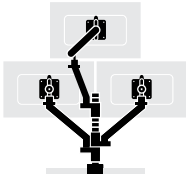
The Flo Modular Monitor Arm uses a single post to accommodate a mix of devices. These can include monitors and laptops weighing from 7 to 20 pounds each. Using the smooth, fingertip control, each person can position equipment wherever needed—up, down, forward, back, or portrait or landscape orientation. The result is a comfortable viewing distance and proper viewing angle, even for those wearing progressive lenses, or when people move from seated to standing postures.



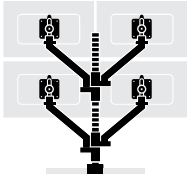
1 Monitor



2 Monitors



3 Monitors



4 Monitors

Wishbone Monitor Arm

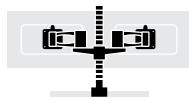
Designed by Colebrook Bosson Saunders

Wishbone's scalable design keeps your options open, adding multiple monitors to a single post as your needs evolve. Its streamlined design frees space on your work surface while positioning your screen at the proper distance to ease neck and eye strain.

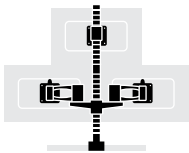
With Wishbone, you can create multi-screen environments. A quick release function allows you to remove a monitor in seconds.



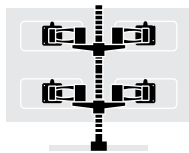
1 Monitor



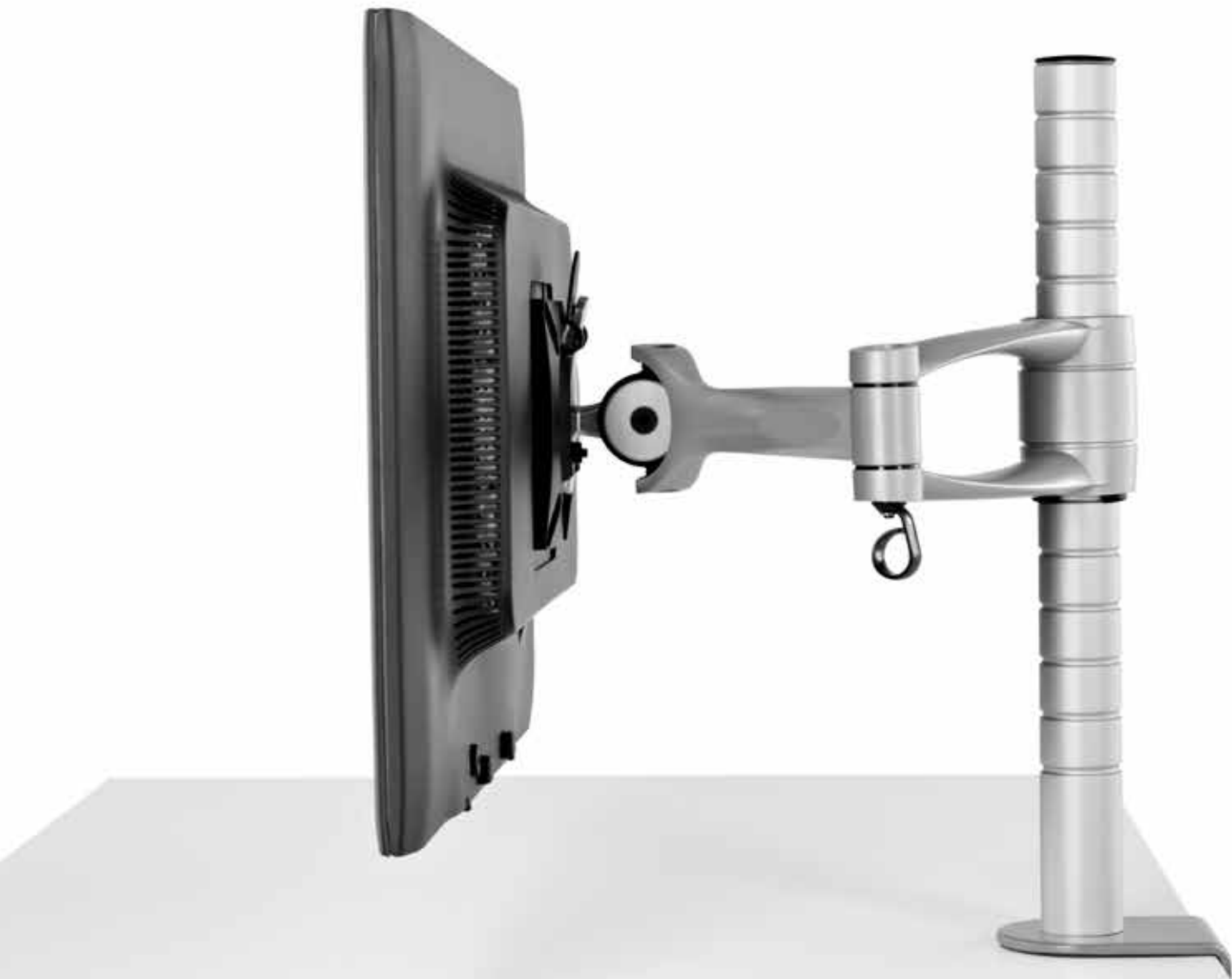
2 Monitors



3 Monitors



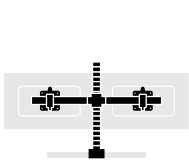
4 Monitors



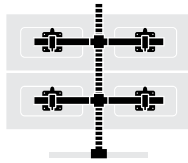
Wishbone Dual Bar Monitor Arm

Designed by Colebrook Bosson Saunders

A simple solution for high-density environments, the Wishbone Dual Bar brings the convenience of multiple screens to spaces with shallow work surfaces. The bar supports monitors weighing up to 26 pounds each, and can hold between two and four monitors.



2 Monitors



4 Monitors







Daisyone® Monitor Arm

Designed by Colebrook Bosson Saunders

Daisyone allows two flat-screen monitors to be mounted at the same height on a single post without additional brackets.

Quick release makes it possible to install and remove Daisyone efficiently, and you can add additional monitors without adding brackets.

Laptop Mount

Designed by Colebrook Bosson Saunders

The Laptop Mount lifts notebook computers off the work surface, allowing workers to adopt better postures and avoid eyestrain while clearing valuable desk space.





Tabetha Tablet Mount

The most successful workplaces give people freedom to choose where and how they work best. The freestanding Tabetha Tablet Mount encourages flexibility, supporting individuals as they focus on detailed tasks or engage with others to solve problems. Tabetha allows people to adjust the height and orientation of their preferred tablet on any work surface so they can select the location and position where they will be the most productive.

Lapjack® Mobile Technology Support
Designed by Colebrook Bosson Saunders

Lapjack lets you put your laptop or tablet at a healthy ergonomic height that reduces eye, back, and neck strain, in the home office or on the road. Designed to be used with a separate mouse and keyboard. Folds flat to carry.





TL Series Keyboard Support

Designed by Colebrook Bosson Saunders

The TL Series Keyboard Support is a compact option that can be mounted directly to the underside of a work surface. It takes up just 10 inches of space, making it ideal for use under surfaces with stiffeners or table troughs, and folds back and beneath the work surface when not in use. Turning a soft touch knob releases the support so it can be tilted back or forward. Reference product index for additional keyboard support solutions.

Loop™ CPU Support

Designed by Colebrook Bosson Saunders

Lightweight and easy to install, Loop supports your CPU with a strong nylon strap that doesn't call attention to itself.

Holds up to 44 pounds and CPUs from 9.5" x 19.75" to 3.125" x 9."





Jaw™ CPU Holder

Designed by Colebrook Bosson Saunders

Jaw clamps to the top and bottom of your CPU, holding it securely in place. Holds up to 55 pounds and CPUs from 11.5" x 20" to 3.5" x 9.5."

Mbrace Wall-Mounted Technology

Perfectly suited for inpatient alcoves or bedside applications, Mbrace makes it easy for caregivers to share information and optimize needed space. It folds to within 9.5 inches from the wall and stores technology of up to 20 pounds. Mbrace has a height-adjustment range that accommodates seated or standing positions for most people and a counterbalance mechanism. Because the keying surface and monitor support are designed to move together, people can use just one hand to operate it. Mbrace can be installed in about 30 minutes.



AV/VC One

Designed by Colebrook Bosson Saunders

AV/VC One is an easy-to-use audio and visual support unit. It supports the digital equipment people need for remote conferencing, presentations, collaborative review, or displays and signage. This cost-effective setup accommodates up to two monitors with a camera, giving meeting participants a better view of each other, the room, and presented material. With high capacity media storage capability and an optional front shelf, AV/VC One conveniently houses a range of technology elements with the flexibility to move from place to place, empowering a variety of demanding AV or VC activities.





Power and Data Access

Power to Your People

At Herman Miller, we believe that for people to do their best work, technology should be human-centered, easy to use, and seamlessly integrated throughout the workplace. That's why we've cultivated a range of power and data access solutions to suit the many ways people work.





Logic Power Access Solutions™
Designed by Brian Alexander

Logic fosters intuitive connections between people and their devices. Its simple design blends into any surface, seamlessly integrating to your space. Flip it up to access power and data outlets, flip it down to keep wires out of sight.

UL and cUL Listed.



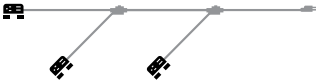
Logic G1000



Logic C1000



Logic Mini



Logic Mini Vine

Logic Reach

Designed by Brian Alexander

Your people work everywhere. Now your power and data do too. Logic Reach is a power distribution system that's as versatile as your people are, powering all the places and ways they work throughout an open office. With just three components, it connects furnishings to power and data in the shortest way possible—a straight line.





Logic Micro Tower

Place power exactly where people need it. Logic Micro Tower brings power sources up from the floor to within arm's reach, enabling people to charge laptops and mobile devices in places where they normally couldn't, using USB-A and USB-C connectivity.

Connect™ Power and Data

Enjoy convenient tabletop access to power and data without the expense and commitment of hard wiring. Connect offers many configurations and a sleek aesthetic. Easy to specify, install, and reconfigure, it provides power and data to virtually any work environment.

Compatible with most technology and furniture, Connect offers one-touch, pop-up surface-flush mount or clamp mount. A voice and data adaptor kit is included, and Connect is available with electrical cord or conduit for hardwire connection.





Lighting

Do You See What I See?

Everyone wants the right amount of light, but that varies from individual to individual. Overhead lighting alone can cause eyestrain for those who need more or different lighting. That's why it's best if you can put light right where you need it, given the specific activity you're tackling, the time of day, and the overhead lighting conditions. Lighting can be used to address social needs, as well. Because it conveys warmth and hospitality, lights can encourage interaction and may increase a sense of well-being. Proper lighting can help you not just work better, but feel better.

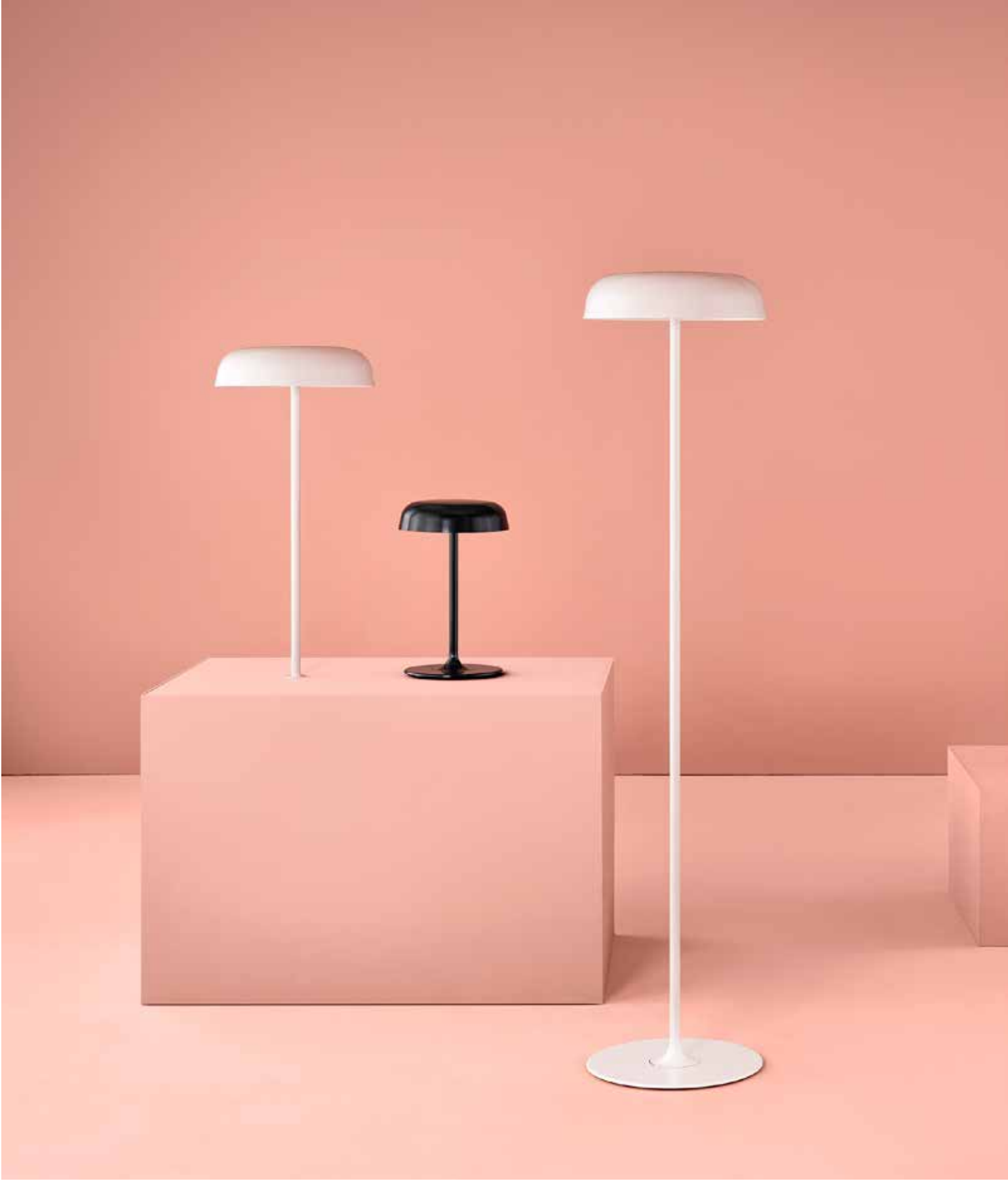




Lolly Personal Light

Designed by Colebrook Bosson Saunders

As compact as it is useful, the Lolly Personal Light is an elegant source of long-lasting light—everything you need and nothing you don't on a work surface. With four dimming settings and a tilting head, shine light where—and how—you need it for work. And because it's lightweight, you can move it around as needed too. The enduring, high-powered LED light is touch-sensitive, powers off after four hours of inactivity, and includes both standards USB-A and USB-C ports for charging devices. With its slim profile and useful design, Lolly helps create an inviting workspace.





Ode™ Lamps

Designed by Sam Hecht and Kim Colin

Poetic in their simplicity, elevated in their attention to detail, Ode Lamps shine a light on what matters most to you. Soft, anti-glare LEDs and spun steel shades create a pool of diffused illumination, appealing to our instincts to come together around light.

Cubert™ Personal Light

Designed by Colebrook Bosson Saunders

Cubert provides power for personal devices in an integrated form—factoring the arrangement of light, USB, and AC power that is more compact than ever achieved before, so it's easier to use and takes up less space. Cubert has the ability to power and charge via two AC sockets and two smart-charging USB ports. Cubert also comprises an intricate, high-quality LED light with a touch-sensitive dimmer and an energy efficient four-hour auto shutoff.



Tone Personal Light

Designed by Tom Newhouse

Tone balances performance and price like no other. A swiveling base and articulated joints give precise control over what you light. The user adjustability, dimmer, and automatic shutoff make it one of the best LED lighting values in the market.

Tone's freestanding base, clamp mount, and rail tile mount fit any environment. An intuitive touch turns the light on and off, and auto shutoff turns off after nine hours, saving energy. The light draws just over six watts. UL Listed.







Flute Personal Light
Designed by Tom Newhouse

A flexible, economical, and lightweight task light, the Flute Personal Light leaves a very small carbon footprint on the earth. With its up-to-date LED technology, Flute provides high-quality light output at an amazingly low cost—about \$1.13 a year—and has a life span of 24 years.



Ergonomics for Everyone

Chairs that move like you move. Surfaces that conform to your shape. Design that fosters connection but also provides some separation. The elements in our portfolio reflect our understanding that to provide the best experience at work, people need a space that supports thinking, moving, and interacting—the cognitive, physical, and social needs we all share. We provide support for the whole person so everyone can work in a way that feels natural to them.



High Performance Work Chairs



Embody Chair
p. 12



Aeron Chair
p. 14, 32,



Cosm Chair
p. 16



Mirra 2 Chair Butterfly Back
p. 18, 38



Mirra 2 Chair TriFlex Back
p. 18, 36, 44



Celle Chair Suspension Back
p. 20



Celle Chair Upholstered Back
p. 20



Sayl Chair Suspension Back
p. 22, 97



Sayl Chair Upholstered Back
p. 22



Lino Chair
p. 24



Verus Chair Suspension Back
p. 26



Verus Chair Upholstered Back
p. 26



Verus Chair TriFlex Back
p. 26



Setu Multipurpose Chair
Suspension Seat and Back
p. 28



Setu Multipurpose Chair
Upholstered Seat and Back
p. 28

Performance Desks and Tables



Renew Link
p. 32



Nevi Link
p. 34



Renew Sit-to-Stand Tables
p. 36



Motia Sit-to-Stand Tables
p. 38



Nevi Sit-to-Stand Tables
p. 40



Exclave
p. 42



Everywhere Tables
p. 12, 28, 42, 44

Technology Support



Ollin Monitor Arms
p. 48



Flo Monitor Arms
p. 50, 34, 37



Flo Dual Monitor Arm
p. 50



Flo Plus Monitor Arm
p. 52



Flo Plus Dual Monitor Arm
p. 52



Flo Modular Monitor Arm
p. 54



Flo Rail Tile Mount



Wishbone Monitor Arm
p. 56



Wishbone Plus Monitor Arm



Wishbone Dual Bar Monitor Arm
p. 58, 32

Technology Support



Daisyone Monitor Arm
p. 60



Laptop Mount
p. 62



Tabetha Tablet Mount
p. 64



Lapjack Mobile Support
p. 66, 18



TL Series Keyboard Support
p. 68



LS Series Keyboard Support



LT Series Keyboard Support



LX Series Keyboard Support



Loop CPU Support
p. 70



Jaw CPU Holder
p. 72



CPU Holder



Mobile CPU Holder



Mbrace Wall-Mounted Technology
p. 74



AV/VC One
p. 76

Power and Data Access



Logic Power Access Solutions
p. 80, 34



Logic Reach
p. 82



Logic Micro Tower
p. 84



Connect Power and Data
p. 86



Connect Modular Solutions

Lighting



Lolly Personal Light
p. 90



Ode Lamps
p. 92, 24



Cubert Personal Light
p. 94



Tone Personal Light
p. 96, 22



Flute Personal Light
p. 98

Desk Accessories



Ubi Work Tools
p. 14, 34, 36, 40



Formwork
p. 18, 22, 25, 36, 38, 44, 96



Magazine Holder



Hanging File Holder



Surface-Attached Tool Rail



Work Surface-Attached Tool Rail



Mini-Shelf



Mini Tackboard



Binder Shelf



Bundle Clip



Document Gripper



Hanger Peg



Pencil Holder



Telephone Tray with Armature



Paper Tray
p. 38



Organizer Tray



Storage Tray



Vertical Tray



Diagonal Tray



Display Tray

Desk Accessories



Pencil Drawer



Marker/Eraser Holder



Bookends



Foot Pillow
p. 26

Screens



Pari Screens
p. 14, 32, 36, 38



Personal Side Screen



Modesty Panel

Comparing High-Performance Work Seating



Embody

Aeron

Cosm

Mirra 2

Overview

Maximum Weight	300 lbs/136 kg	350 lbs/159 kg	350 lbs/159 kg	350 lbs/159 kg
Ergonomic Support	●●●●	●●●●	●●●●	●●●○
Breathability	●●●○	●●●●	●●●●	●●●●

Product Features

Adjustable Seat Height	●	●	●	●
Adjustable Seat Depth	●			●
Armless Option	●	●	●	●
Adjustable Arms	●	●	●	●
Lumbar Support	●	●	●	●
Sacral Support	●	●		●
Tilt/Recline	●	●	●	●

Finish Options

Range of Materials	●●○○	●○○○	●○○○	●●○○
Range of Colors	●●●○	●○○○	●●○○	●●●○
Polished Aluminum Base	●	●	●	●
Leather				

Family

Performance Work Chair	●	●	●	●
Multi-Use/Guest		●	●	
Stool		●	●	●
Lounge				



Celle

Sayl

Lino

Verus

Setu

350 lbs/159 kg

350 lbs/159 kg

350 lbs/159 kg

350 lbs/159 kg

300 lbs/136 kg

●●●○

●●●○

●●●○

●●●○

●●●○

●●○○

●●○○

●●○○

●●○○

●●●●

●

●

●

●

●

●

●

●

●

●

●

●

●

●

●

●

●

●

●

●

●

●

●

●

●

●

●

●

●

●

●

●

●

●

●

●●●●

●●●●

●●●●

●●●●

●●●●

●●●●

●●●○

●●●○

●●●○

●●●○

●

●

●

●

●

●

●

●

●

●

●

●

●

●

●

●

●

●

●

●

Comparing Dynamic Monitor Arms



Ollin



Flo



Flo Dual

User Needs

Single	●	●	●
Dual	●		●

Ergonomic Highlights

Vertical Adjustment	13.5"	13.5"	13.5"
Horizontal Adjustment	26.5"	20.6"	20.6"
Tilt Range	80° Rearward, 10° Forward	+/- 40°	+/- 40°
Swivel Range		180°	180°

Specs

Maximum Monitor Weight	20 lbs/9 kg	20 lbs/9 kg	20 lbs/9 kg
Minimum Monitor Weight	0 lbs/0 kg	7 lbs/3.2 kg	7 lbs/3.2 kg
Scalable Solution			
Adjustability	Dynamic	Dynamic	Dynamic
Attachments	Monitor/Tablet/Laptop	Monitor/Tablet/Laptop	Monitor/Tablet/Laptop



Flo Modular



Flo Plus Single



Flo Plus Dual

●	●	●
●		●
18.5"	13.0"	13.0"
20.6"	23.27"	23.27"
+/- 40°	+/- 35°	+/- 35°
180°	180°	180°
20 lbs/9 kg	40 lbs each/18 kg each	20 lbs each/9 kg each
7 lbs/3.2 kg	20 lbs each/9 kg each	10 lbs each/4.5 kg each
●	●	
Dynamic	Dynamic	Dynamic
Monitor/Tablet/Laptop	Monitor	Monitor

Comparing High-Density Monitor Arms



Wishbone



Wishbone Plus

User Needs

Single	●	●
Dual	●	●
Triple	●	●
Quad	●	●

Ergonomic Highlights

Vertical Adjustment	13.0"	13.0"
Horizontal Adjustment	16.75"	17.25"
Tilt Range	+/- 50°	+/- 50°
Swivel Range	180°	180°

Specs

Maximum Monitor Weight	26 lbs each/11.8 kg each	52 lbs each/23.6 kg each
Minimum Monitor Weight	0 lbs	0 lbs
Scalable Solution	●	●
Adjustability	Static	Static
Attachments	Monitor/Tablet/Laptop	Monitor/Tablet/Laptop



Wishbone Dual Bar



Daisyone

	●
●	●
	●
●	●
-	17.0"
-	19.875"
+/- 50°	+/- 50°
-	180°
26 lbs each/11.8 kg each	19 lbs each/8.6 kg each
0 lbs	0 lbs
●	●
Static	Static
Monitors	Monitor/Tablet/Laptop

