



TIRE EQUIPMENT

2018/2019

MADE IN ITALY 





GRIPline
TIRE CHANGERS

GRIPline



- Turntable tightening up to 24"
- Long-lasting jaws made of hardened steel
- Reinforced chassis and tower
- Single rotation speed
- Bead breaker double effect. Cylinder Ø 200 mm
- Pneumatic lifting of the tool
- Equipped with pressure gauge for tire inflation

DATASHEET

- Working pressure: 8 - 10 bar
- Turntable tightening: outward 10"-22" - inward 12"-24"
- Tire width: min. 3" - max 15"
- Maximum tire diameter: 1000 mm
- Rotation speed: 7 rpm
- Weight: 225 kg
- Dimensions (H x D x L): 1890 x 1590 x 2020 mm
- Nylon package on pallet (H x D x L): 1840 x 1150 x 1430 mm

CODE	DESCRIPTION
6001	GRIP 22 Power supply: 3-phase 400V - 50/60 Hz
6001/M	GRIP 22 Power supply: single-phase 230V - 50 Hz

STANDARD EQUIPMENT



- Kit of 4 plastic protection jaws



- Mounting lever 500 mm



- N. 1 mounting tool cover



- N. 1 demounting head tongue protection

EXTRA OPTIONS FOR TIRE CHANGERS GRIP 22



ART. 6205

- Universal adaptor kit for motorbike wheels



ART. 6219

- Kit of 4 clamping adaptors for motorbike wheels from 6" to 24"



ART. 6220

- Kit of 4 clamping adaptors for motorbike wheels, oversized height from 6" to 24"



ART. 6221

- Kit of 4 rubber costed jaw protectors



ART. 6222

- Quick release kit for mounting tools with plastic tools



ART. 6223

- Plastic protection suitable for bead breaker



ART. 6224

- Mounting tool cover



ART. 6225

- Demounting head tongue protection



ART. 6244

- Bead pressing device



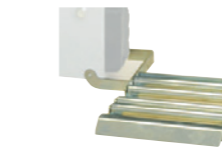
ART. 6245

- Higher bead pressing device



ART. 6246

- Mounting tool cover (for ART. 6222)



ART. 6249

- Roller board



ART. 6253

- Small helper arm (optional for IRON ARM)



ART. 6254

- Inflating tubeless kit



ART. 6255

- Iron Arm

GRIP22

Iron Arm



- Turntable tightens up to 24"
- Long-lasting jaws made of hardened steel
- Reinforced chassis and tower
- Single rotation speed
- Bead breaker double effect. Cylinder Ø 200 mm
- Pneumatic lifting of the tool
- Equipped with pressure gauge for tire inflation
- Side IRON ARM for standard RUN FLAT tires

DATASHEET

- Working pressure: 8 - 10 bar
- Turntable tightening: outward 10"-22" - inward 12"-24"
- Tire width: min. 3" - max 15"
- Maximum tire diameter: 1000 mm
- Rotation speed: 7 rpm
- Weight: 315 kg
- Dimensions (H x D x L): 1890 x 1590 x 2020 mm
- Nylon packaging on pallet: 1840 x 1150 x 1430 mm

CODE	DESCRIPTION
6003	GRIP 22 Power supply: 3-phase 400V - 50/60 Hz
6003/M	GRIP 22 Power supply: single phase 230V - 50 Hz

STANDARD EQUIPMENT



- Kit of 4 plastic protection jaws



- Mounting lever 500 mm



- N. 1 mounting tool cover



- N. 1 demounting head tongue protection

EXTRA OPTIONS FOR TIRE CHANGERS GRIP 22



ART. 6205

- Universal adaptor kit for motorbike wheels



ART. 6219

- Kit of 4 clamping adaptors for motorbike wheels from 6" to 24"



ART. 6220

- Kit of 4 clamping adaptors for motorbike wheels, oversized height from 6" to 24"



ART. 6221

- Kit of 4 rubber costed jaw protectors



ART. 6222

- Quick release kit for mounting tools with plastic tools



ART. 6223

- Plastic protection suitable for bead breaker



ART. 6224

- Mounting tool cover



ART. 6225

- Demounting head tongue protection



ART. 6244

- Bead pressing device



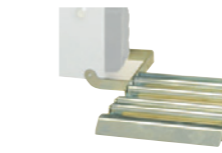
ART. 6245

- Higher bead pressing device



ART. 6246

- Mounting tool cover (for ART. 6222)



ART. 6249

- Roller board



ART. 6253

- Small helper arm (optional for IRON ARM)



ART. 6254

- Inflating tubeless kit

GRIP22

Double Speed Iron Arm



- Turntable tightens up to 24"
- Long-lasting jaws made of hardened steel
- Reinforced chassis and tower
- Double speed controlled by pedal
- Bead breaker double effect. Cylinder Ø 200 mm
- Pneumatic lifting of the tool
- Equipped with pressure gauge for tire inflation
- Side IRON ARM for standard RUN FLAT tires

DATASHEET

- Working pressure: 8 - 10 bar
- Turntable tightening: outward 10"-22" - inward 12"-24"
- Tire width: min. 3" - max 15"
- Maximum tire diameter: 1000 mm
- Rotation speed: 7 - 14 rpm
- Weight: 315 kg
- Dimensions (H x D x L): 1890 x 1590 x 2020 mm
- Nylon packaging on pallet: 1840 x 1150 x 1430 mm

CODE	DESCRIPTION
------	-------------

6003/2V	GRIP 22 Power supply: 3-phase 400V - 50Hz
----------------	--

STANDARD EQUIPMENT



- Kit of 4 plastic protection jaws



- Mounting lever 500 mm

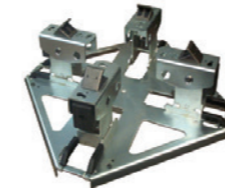


- N. 1 mounting tool cover



- N. 1 demounting head tongue protection

EXTRA OPTIONS FOR TIRE CHANGERS GRIP 22



ART. 6205

- Universal adaptor kit for motorbike wheels



ART. 6219

- Kit of 4 clamping adaptors for motorbike wheels from 6" to 24"



ART. 6220

- Kit of 4 clamping adaptors for motorbike wheels, oversize height from 6" to 24"



ART. 6221

- Kit of 4 rubber costed jaw protectors



ART. 6222

- Quick release kit for mounting tools with plastic tools



ART. 6223

- Plastic protection suitable for bead breaker



ART. 6224

- Mounting tool cover



ART. 6225

- Demounting head tongue protection



ART. 6244

- Bead pressing device



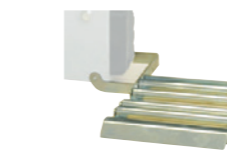
ART. 6245

- Higher bead pressing device



ART. 6246

- Mounting tool cover (for ART. 6222)



ART. 6249

- Roller board



ART. 6253

- Small helper arm (optional for IRON ARM)



ART. 6254

- Inflating tubeless kit

GRIP22

Leverless Iron Arm



- Turntable tightens up to 24"
- Long-lasting jaws made of hardened steel
- Reinforced chassis and tower
- Single rotation speed
- Bead breaker double effect. Cylinder Ø 200 mm
- Pneumatic lifting of the tool
- Equipped with pressure gauge for tire inflation
- Side IRON ARM for standard RUN FLAT tires
- Standard equipped with LEVERLESS system

DATASHEET

- Working pressure: 8 - 10 bar
- Turntable tightening: outward 10"-22" - inward 12"-24"
- Tire width: min. 3" - max 15"
- Maximum tire diameter: 1000 mm
- Rotation speed: 7 rpm
- Weight: 334 kg
- Dimensions (H x D x L): 1890 x 1590 x 2020 mm
- Nylon packaging on pallet: 1840 x 1150 x 1430 mm

CODE	DESCRIPTION
------	-------------

6003/L	GRIP 22 Power supply: 3-phase 400V - 50/60Hz
--------	--

STANDARD EQUIPMENT



- Kit of 4 plastic protection jaws



- Mounting lever 500 mm



- N. 1 mounting tool cover



- N. 1 demounting head tongue protection

EXTRA OPTIONS FOR TIRE CHANGERS GRIP 22



ART. 6221

- Kit of 4 rubber costed jaw protectors



ART. 6223

- Plastic protection suitable for bead breaker



ART. 6240

- Kit of 10 demounting head tongue protection



ART. 6241

- Kit of 10 mounting tool cover



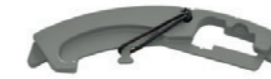
ART. 6244

- Bead pressing device



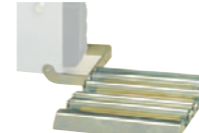
ART. 6245

- Higher bead pressing device



ART. 6247

- Adjusting device for leverless tool



ART. 6249

- Roller board

ART. 6253

- Small helper arm (optional for IRON ARM)



ART. 6254

- Inflating tubeless kit



- Turntable tightens up to 26"
- Long-lasting jaws made of hardened steel.
- "Easy Access" extractable pedal box for quick service
- Reinforced chassis and tower
- Double rotation speed by pedal
- Pneumatic lifting of the tool
- Bead breaker double effect. Cylinder Ø 200 mm
- Pneumatic tilting tower
- Adjustable bead breaker shovel angle
- POWER OUT patented system for granting no BB shovel stuck into the rim
- Tire inflation by pedal

DATASHEET

- Working pressure: 8 - 10 bar
- Turntable tightening: outward 10"-24" - inward 12"-26"
- Tire width: min. 3" - max 16"
- Maximum tire diameter: 1100 mm
- Rotation speed: 7 - 14 rpm
- Weight: 270 kg
- Dimensions (H x D x L): 1890 x 1590 x 2040 mm
- Cardboard box packaging: 1880 x 1150 x 1430 mm

CODE	DESCRIPTION
6011	GRIP 24 Power supply: 3-phase 400V - 50Hz

STANDARD EQUIPMENT



- Kit of 4 plastic protection jaws



- Mounting lever 500 mm



- N. 3 mounting tool cover



- N. 3 demounting head tongue protection



- Plastic protection suitable for bead breaker

EXTRA OPTIONS FOR TIRE CHANGERS GRIP 24



ART. 6205

- Universal adaptor kit for motorbike wheels



ART. 6219

- Kit of 4 clamping adaptors for motorbike wheels from 6" to 24"



ART. 6220

- Kit of 4 clamping adaptors for motorbike wheels, oversized height from 6" to 24"



ART. 6221

- Kit of 4 rubber costed jaw protectors



ART. 6222

- Quick release kit for mounting tools with plastic tools



ART. 6223

- Plastic protection suitable for bead breaker



ART. 6224

- Mounting tool cover



ART. 6225

- Demounting head tongue protection



ART. 6244

- Bead pressing device



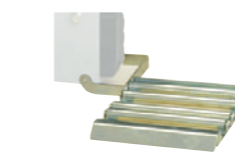
ART. 6245

- Higher bead pressing device



ART. 6246

- Mounting tool cover (for ART. 6222)



ART. 6249

- Roller board



ART. 6253

- Small helper arm (optional IRON ARM)



ART. 6254

- Inflating tubeless kit



ART. 6255

- Iron Arm



- Turntable tightens up to 26"
- Long-lasting jaws made of hardened steel
- "Easy Access" extractable pedal box for quick service
- Reinforced chassis and tower
- Double rotation speed by pedal with INVERTER
- Pneumatic lifting of the tool
- Bead breaker double effect. Cylinder Ø 200 mm
- Pneumatic tilting tower
- Adjustable bead breaker shovel angle
- POWER OUT patented system for granting no BB shovel stuck into the rim
- Tire inflation by pedal

DATASHEET

- Working pressure: 8 - 10 bar
- Turntable tightening: outward 10"- 24" inward 12"- 26"
- Tire width: min. 3" - max 16"
- Maximum tire diameter: 1100 mm
- Rotation speed: 7 - 16 rpm
- Weight: 270 kg
- Dimensions (H x D x L): 1890 x 1590 x 2040 mm
- Cardboard box packaging: 1880 x 1150 x 1430 mm

CODE	DESCRIPTION
------	-------------

6011/M	GRIP 24 Power supply: single-phase 230V - 50/60Hz
--------	---

STANDARD EQUIPMENT



- Kit of 4 plastic protection jaws



- Mounting lever 500 mm



- N. 3 mounting tool cover



- N. 3 demounting head tongue protection



- Plastic protection suitable for bead breaker

EXTRA OPTIONS FOR TIRE CHANGERS GRIP 24



ART. 6205

- Universal adaptor kit for motorbike wheels



ART. 6219

- Kit of 4 clamping adaptors for motorbike wheels from 6" to 24"



ART. 6220

- Kit of 4 clamping adaptors for motorbike wheels, oversize height from 6" to 24"



ART. 6221

- Kit of 4 rubber costed jaw protectors



ART. 6222

- Quick release kit for mounting tools with plastic tools



ART. 6223

- Plastic protection suitable for bead breaker



ART. 6224

- Mounting tool cover



ART. 6225

- Demounting head tongue protection



ART. 6244

- Bead pressing device



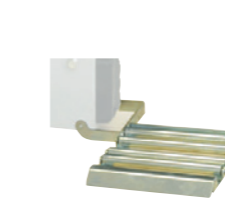
ART. 6245

- Higher bead pressing device



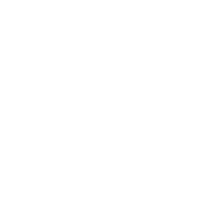
ART. 6246

- Mounting tool cover (for ART. 6222)



ART. 6249

- Roller board



ART. 6253

- Small helper arm (optional IRON ARM)



ART. 6254

- Inflating tubeless kit



ART. 6255

- Iron Arm



- Turntable tightens up to 26"
- Long-lasting jaws made of hardened steel
- "Easy Access" extractable pedal box for quick service
- Reinforced chassis and tower
- Double rotation speed by pedal with INVERTER
- Pneumatic lifting of the tool
- Bead breaker double effect. Cylinder Ø 200 mm
- Pneumatic tilting tower
- Adjustable bead breaker shovel angle
- POWER OUT patented system for granting no BB shovel stuck into the rim
- Tire inflation by pedal
- Side arm for standard RUN FLAT tires

DATASHEET

- Working pressure: 8 - 10 bar
- Turntable tightening: outward 10"- 24" inward 12"- 26"
- Tire width: min. 3" - max 16"
- Maximum tire diameter: 1100 mm
- Rotation speed: 7 - 14 rpm
- Weight: 360 kg
- Dimensions (H x D x L): 1890 x 1590 x 2040 mm
- Cardboard box packaging: 1880 x 1150 x 1430 mm

CODE	DESCRIPTION
------	-------------

6012	GRIP 24 Power supply: 3-phase 400V - 50Hz
-------------	--

STANDARD EQUIPMENT



- Kit of 4 plastic protection jaws



- Mounting lever 500 mm



- N. 3 mounting tool cover



- N. 3 demounting head tongue protection



- Plastic protection suitable for bead breaker

EXTRA OPTIONS FOR TIRE CHANGERS GRIP 24



ART. 6205

- Universal adaptor kit for motorbike wheels



ART. 6219

- Kit of 4 clamping adaptors for motorbike wheels from 6" to 24"



ART. 6220

- Kit of 4 clamping adaptors for motorbike wheels, oversize height from 6" to 24"



ART. 6221

- Kit of 4 rubber costed jaw protectors



ART. 6222

- Quick release kit for mounting tools with plastic tools



ART. 6223

- Plastic protection suitable for bead breaker



ART. 6224

- Mounting tool cover



ART. 6225

- Demounting head tongue protection



ART. 6244

- Bead pressing device



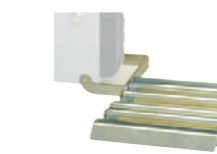
ART. 6245

- Higher bead pressing device



ART. 6246

- Mounting tool cover (for ART. 6222)



ART. 6249

- Roller board



ART. 6254

- Inflating tubeless kit

GRIP24

Inverter
Iron Arm



- Turntable tightens up to 26"
- Long-lasting jaws made of hardened steel
- "Easy Access" extractable pedal box for quick service
- Reinforced chassis and tower
- Double rotation speed by pedal with INVERTER
- Pneumatic lifting of the tool
- Bead breaker double effect. Cylinder Ø 200 mm
- Pneumatic tilting tower
- Adjustable bead breaker shovel angle
- POWER OUT patented system for granting no BB shovel stuck into the rim
- Tire inflation by pedal
- Side arm for standard RUN FLAT tires

DATASHEET

- Working pressure: 8 - 10 bar
- Turntable tightening: outward 10"- 24" inward 12"- 26"
- Tire width: min. 3" - max 16"
- Maximum tire diameter: 1100 mm
- Rotation speed: 7 - 16 rpm
- Weight: 360 kg
- Dimensions (H x D x L): 1890 x 1590 x 2040 mm
- Cardboard box packaging: 1880 x 1150 x 1430 mm

CODE	DESCRIPTION
6012/M	GRIP 24 Power supply: single-phase 230V - 50/60Hz

STANDARD EQUIPMENT



- Kit of 4 plastic protection jaws



- Mounting lever 500 mm



- N. 3 mounting tool cover

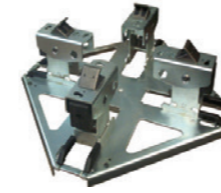


- N. 3 demounting head tongue protection



- Plastic protection suitable for bead breaker

EXTRA OPTIONS FOR TIRE CHANGERS GRIP 24



ART. 6205

- Universal adaptor kit for motorbike wheels



ART. 6219

- Kit of 4 clamping adaptors for motorbike wheels from 6" to 24"



ART. 6220

- Kit of 4 clamping adaptors for motorbike wheels, oversize height from 6" to 24"



ART. 6221

- Kit of 4 rubber costed jaw protectors



ART. 6222

- Quick release kit for mounting tools with plastic tools



ART. 6223

- Plastic protection suitable for bead breaker



ART. 6224

- Mounting tool cover



ART. 6225

- Demounting head tongue protection



ART. 6244

- Bead pressing device



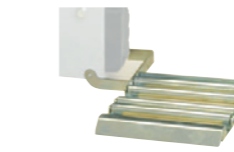
ART. 6245

- Higher bead pressing device



ART. 6246

- Mounting tool cover (for ART. 6222)



ART. 6249

- Roller board



ART. 6254

- Inflating tubeless kit

GRIP24

Leverless
Inverter
Iron Arm



- Turntable tightens up to 26"
- Long-lasting jaws made of hardened steel
- "Easy Access" extractable pedal box for quick service
- Reinforced chassis and tower
- Double rotation speed by pedal with INVERTER
- Pneumatic lifting of the tool
- Bead breaker double effect. Cylinder Ø 200 mm
- Pneumatic tilting tower
- Adjustable bead breaker shovel angle
- POWER OUT patented system for granting no BB shovel stuck into the rim
- Tire inflation by pedal
- Side arm for standard RUN FLAT tires
- Standard equipped with LEVERLESS system

DATASHEET

- Working pressure: 8 - 10 bar
- Turntable tightening: outward 10"- 24" inward 12"- 26"
- Tire width: min. 3" - max 16"
- Maximum tire diameter: 1100 mm
- Rotation speed: 7 - 16 rpm
- Weight: 379 kg
- Dimensions (H x D x L): 1890 x 1590 x 2040 mm
- Cardboard box packaging: 1880 x 1150 x 1430 mm

CODE	DESCRIPTION
6012/ML	GRIP 24 Power supply: single-phase 230V - 50/60Hz

STANDARD EQUIPMENT



- Kit of 4 plastic protection jaws



- Mounting lever 500 mm



- N. 3 mounting tool cover



- N. 3 demounting head tongue protection



- Plastic protection suitable for bead breaker

EXTRA OPTIONS FOR TIRE CHANGERS GRIP 24



ART. 6221

- Kit of 4 rubber costed jaw protectors



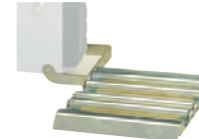
ART. 6247

- Adjusting device for leverless tool



ART. 6223

- Plastic protection suitable for bead breaker



ART. 6249

- Roller board



ART. 6240

- Kit of 10 demounting head tongue protection



ART. 6254

- Inflating tubeless kit



ART. 6241

- Kit of 10 mounting tool cover



ART. 6244

- Bead pressing device



ART. 6245

- Higher bead pressing device

GRIP34

Leverless
Inverter



- Rim clamping up to 34"
- Automatic tire leverless system, for disassembling and reassembling
- "Easy Access" extractable pedal box for quick service
- Double arm/disk air operated bead breaker system
- Reinforced chassis and tower
- Patented ultra-quick wheel-clamping system, through cone and shaft with lock nut
- Double rotation speed INVERTER system
- Standard equipped with slide lift max capacity 80 kg
- Bead pressing arm complete with self-storage function
- Locking system for total stiff locking of horizontal and operating arm

DATASHEET

	Working pressure: 8 - 10 bar
	Rim clamping range: 10" - 34"
	Max tire width: min. 3" - max 16"
	Maximum tire diameter: 1200 mm
	Rotation speed: 7 - 16 rpm
	Weight: 395 kg
	Dimensions (H x D x L): 2300 x 1888 x 1980
	Cardboard box packaging: 1880 x 1150 x 1420 mm

CODE	DESCRIPTION
6040	GRIP 34 Power supply: single-phase 230V - 50/60Hz

STANDARD EQUIPMENT

- N. 2 rubber protection for clamping chuck
- Special plastic tire lever
- N. 3 mounting tool cover
- N. 3 demounting head tongue protection
- Bead pressing device
- N. 2 plastic protection for lock nut centering cone

EXTRA OPTIONS FOR TIRE CHANGERS GRIP 34

- ART. 6227**
 - Kit of 10 rubber protection for clamping chuck
- ART. 6228**
 - Kit of 10 plastic protection for lock nut centering cone
- ART. 6229**
 - Plastic tire lever. To be used during tire demanding in accordance with the WDK procedure
- ART. 6230**
 - Kit of 4 rubber protection for alloy wheels with exposed spokes
- ART. 6231**
 - Nylon cone for special LAMBORGHINI wheels, center hole diameter from 55 - 85 mm
- ART. 6232**
 - Nylon cone for special PORSCHE wheels, allows clamping wheels with center hole diameter from 60 to 85 mm
- ART. 6233**
 - Nylon cone for special BMW wheels, allows clamping wheels with center hole diameter from 55 to 70 mm
- ART. 6234**
 - Double face cone for light trucks, allows clamping VANs and LCVs wheels with center hole diameter from 75 to 145 mm
- ART. 6235**
 - Truck cone kit, allows clamping VANs and LCVs wheels with center hole diameter from 120 to 190 mm
- ART. 6236**
 - Truck cone kit, allows clamping VANs and LCVs wheels with center hole diameter from 190 to 223 mm
- ART. 6237**
 - Wheel clamping adaptor for reverse mounted wheels and wheels with no center hole
- ART. 6238**
 - Cone for steel rims with low thickness and center hole diameter from 75 to 120 mm
- ART. 6239**
 - Inflating tubeless kit
- ART. 6240**
 - Kit of 10 demounting head tongue protection
- ART. 6241**
 - Kit of 10 mounting tool cover
- ART. 6244**
 - Higher bead pressing device
- ART. 6245**
 - Bead pressing device
- ART. 6247**
 - Adjusting device for leverless tools



- Rim clamping up to 30"
- Double arm/disk bead breaker system, powered by motoinverter
- Bead breaker disks' power 6860 Nm
- Wheel positioning through motorized clamping chuck and laser pointers (patented)
- Control console ergonomically designed
- Reinforced chassis and tower
- Patented ultra -quick wheel-clamping system, through cone and shaft with lock nut
- Double rotation speed INVERTER system, both direction
- Equipped with wheel lifter, lifting capacity max 80 kg
- Equipped with bead pressing arm, complete with self-storage function
- Locking system for total stiff locking of horizontal and operating arm

DATASHEET

	Working pressure: 8 - 10 bar
	Rim clamping range: 12" - 30"
	Max tire width: min. 3" - max 16"
	Maximum tire diameter: 1200 mm
	Rotation speed: 7 - 16 rpm
	Weight: 672 kg
	Dimensions (H x D x L): 1750 x 1850 x 1800
	Cardboard box packaging: 1880 x 1150 x 1420 mm

CODE	DESCRIPTION
6050	GRIP RS Power supply: single-phase 230V - 50/60Hz

STANDARD EQUIPMENT

- N. 2 rubber protection for clamping chuck
- Special plastic tire lever
- Kit of nylon plastic protections mounting/demounting tools
- N. 2 plastic protection for lock nut centering cone
- Bead pressing device

EXTRA OPTIONS FOR TIRE CHANGERS GRIP RS

- ART. 6226**
 - Kit of nylon plastic protections mounting/demounting tools
- ART. 6227**
 - Kit of 10 rubber protection for clamping chuck
- ART. 6228**
 - Kit of 10 plastic protection for lock nut centering cone
- ART. 6229**
 - Plastic tire lever. To be used during tire demanding in accordance with the WDK procedure
- ART. 6230**
 - Kit of 4 rubber protection for alloy wheels with exposed spokes
- ART. 6231**
 - Nylon cone for special LAMBORGHINI wheels, center hole diameter from 55 - 85 mm
- ART. 6232**
 - Nylon cone for special PORSCHE wheels, allows clamping wheels with center hole diameter from 60 to 85 mm
- ART. 6233**
 - Nylon cone for special BMW wheels, allows clamping wheels with center hole diameter from 55 to 70 mm
- ART. 6234**
 - Double face cone for light trucks, allows clamping VANs and LCVs wheels with center hole diameter from 75 to 145 mm
- ART. 6235**
 - Truck cone kit, allows clamping VANs and LCVs wheels with center hole diameter from 120 to 190 mm
- ART. 6236**
 - Truck cone kit, allows clamping VANs and LCVs wheels with center hole diameter from 190 to 223 mm
- ART. 6237**
 - Wheel clamping adaptor for reverse mounted wheels and wheels with no center hole
- ART. 6238**
 - Cone for steel rims with low thickness and center hole diameter from 75 to 120 mm
- ART. 6244**
 - Higher bead pressing device
- ART. 6245**
 - Bead pressing device
- ART. 6256**
 - Inflating tubeless kit for GRIP RS



- Hydraulic spindle with adjustable pressure
- Reversible rotation
- Hydraulic fitting carriage sliding
- Control unit ergonomically designed
- Jaws with different rim's grip to fit all models
- Quick rotation system for operating arm
- Bead breaking force 26500 Nm

DATASHEET

	Spindle tightening inward: 14" - 26"
	Tire width: 850 mm - 34"
	Maximum tire diameter: 1640 mm - 65"
	Maximum tire weight: 1200 kg
	Rotation speed: 7 rpm
	Engine power: 1,5 kw
	Weight: 605 kg
	Dimensions (H x D x L): 1095 x 1650 x 1800 mm
	Cardboard box packaging: 980 x 1520 x 1900 mm



CODE	DESCRIPTION
7000	GRIP 26 SUPER Power supply: 3-phase 400V - 50/60Hz

STANDARD EQUIPMENT



- Mounting lever 500 mm
- Long mounting lever
- Rim clamp for industrial wheels

EXTRA OPTIONS FOR TIRE CHANGERS GRIP RS



ART. 7055

- Rim clamp for aluminum rims



ART. 7056

- Aluminum protection jaws, set of 4, for fitting to the clamps jaws



ART. 7057

- Rims adaptors kit.
Central hole 80 mm



ART. 7050

- Inflation cage for truck tires

INFLATION CAGE FEATURES

Weight: 166 kg
 External dimensions (H x D x L): 1580 x 1600 x 800 mm
 Internal dimensions (H x D x L): 1500 x 1500 x 700 mm
 Maximum tire diameter: 1500 mm
 Maximum tire width: 700 mm



- Hydraulic spindle with adjustable pressure
- Double speed and reversable rotation
- Hydraulic fitting carriage sliding
- Control unit ergonomically designed
- Jaws with different rim's grip to fit all models
- Quick rotation system for operating arm
- Bead breaking force 26500 Nm

DATASHEET

- Spindle tightening inward: 14" - 42"
- Tire width: 1150 mm - 45"
- Maximum tire diameter: 2300 mm - 91"
- Maximum tire weight: 2000 kg
- Rotation speed: 4,5 - 9 rpm
- Engine power: 2,2 - 3 kw
- Weight: 880 kg
- Dimensions (H x D x L): 1750 x 2150 x 2500 mm
- Cardboard box packaging: 1025 x 2250 x 1950 mm



CODE	DESCRIPTION
7005	GRIP 52 SUPER Power supply: 3-phase 400V - 50/60Hz

STANDARD EQUIPMENT



- Mounting lever 500 mm
- Long mounting lever
- Rim clamp for industrial wheels

EXTRA OPTIONS FOR TIRE CHANGERS GRIP 52 SUPER



ART. 7052

- Protective jaws for aluminum rims, set of 4



ART. 7054

- Clamping extension jaw, set of 4



ART. 7055

- Rim clamp for aluminum rims



ART. 7057

- Rims adaptors kit. Central hole 80 mm



ART. 7050

- Inflation cage for truck tires

INFLATION CAGE FEATURES

Weight: 166 kg
 External dimensions (H x D x L): 1580 x 1600 x 800 mm
 Internal dimensions (H x D x L): 1500 x 1500 x 700 mm
 Maximum tire diameter: 1500 mm
 Maximum tire width: 700 mm



ROLLline

WHEEL BALANCER

ROLLline

ROLL55

Digital display
Automatic approximation of the width
Automatic programs
Electric brake



- Internal electronic measuring arm for rim distance, diameter and wheel adhesive weights' positioning
- Automatic measuring for rim's width
- Automatic selection of balancing program
- Threaded screw 40 mm
- Equipped with electric brake
- Automatic braking when reaching the position
- Ergonomically designed, allows the best access within the rim
- Fast measurement cycle in 5 seconds
- Hidden behind spokes, wheel weights' program
- Double digital display panel highly visible with intuitive control
- Self-calibration and self-diagnosis

DATASHEET

	Accuracy: 1 gr
	Tire width: min 1,5" - max 20"
	Rim diameter: min 10" - max 30"
	Max wheel diameter: 1050 mm
	Rotation speed: 98 rpm
	Max wheel weight: 75 kg
	Weight: 105 kg
	Dimensions (H x D x L): 1050 x 850 x 1150 mm
	Cardboard box packaging: 1440 x 680 x 980 mm

CODE	DESCRIPTION
8001	ROLL 55 Power supply: single-phase 230V - 50/60Hz

STANDARD EQUIPMENT



- Threaded screw with block 40 mm
- Quick nut
- N. 3 cones from 42 to 111,5 mm



- Weight pliers
- Calibration weight
- Weight sample

EXTRA OPTION FOR WHEEL BALANCER ROLL 55



ART. 8207

- Motorbike flange kit



ART. 8208

- Motorbike threaded screw kit 19 mm with bushes



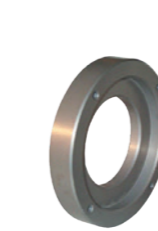
ART. 8204

- Precision bush kit from 52,5 to 122 mm of 9



ART. 8213

- 3-4-5 hole flange



ART. 8214

- Spacer for sport wheels



ART. 8215

- Bush for kit 8214



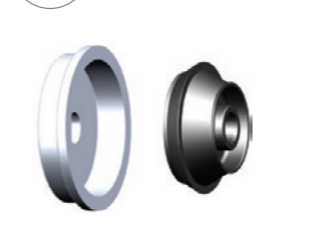
ART. 8216

- Plastic cup with widen diameter for allow wheels



ART. 8217

- Quick nut with lockring and rubber protection



ART. 8201

- Van wheel kit, hole dim. 122 - 174 mm



ART. 8202

- Slide lift



ART. 8203

- SUV cone 95 - 132 mm

ROLL55

Digital display
Automatic approximation of the width
Automatic programs
Electric brake
Wheel guard



- Internal electronic measuring arm for rim distance, diameter and wheel adhesive weights' positioning
- Automatic measuring for rim's width
- Automatic selection of balancing program
- Threaded screw 40 mm
- Equipped with electric brake
- Automatic braking when reaching the position
- Ergonomically designed, allows the best access within the rim
- Fast measurement cycle in 5 seconds
- Hidden behind spokes, wheel weights' program
- Double digital display panel highly visible with intuitive control
- Wheel guard
- Self-calibration and self-diagnosis

DATASHEET

	Accuracy: 1 gr
	Tire width: min 1,5" - max 20"
	Rim diameter: min 10" - max 30"
	Max wheel diameter: 1050 mm
	Rotation speed: 98 rpm
	Max wheel weight: 75 kg
	Weight: 115 kg
	Dimensions (H x D x L): 1050 x 850 x 1150 mm
	Cardboard box packaging: 1330 x 1330 x 1330 mm

CODE	DESCRIPTION
8002	ROLL 55 Power supply: single-phase 230V - 50/60Hz

STANDARD EQUIPMENT



- Threaded screw with block 40 mm
- Quick nut
- N. 3 cones from 42 to 111,5 mm



- Weight pliers
- Calibration weight
- Weight sample

EXTRA OPTION FOR WHEEL BALANCER ROLL 55



ART. 8207

- Motorbike flange kit



ART. 8208

- Motorbike threaded screw kit 19 mm with bushes



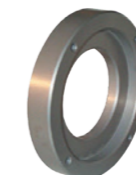
ART. 8204

- Precision bush kit from 52,5 to 122 mm of 9



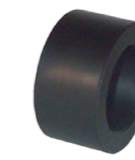
ART. 8213

- 3-4-5 hole flange



ART. 8214

- Spacer for sport wheels



ART. 8215

- Bush for kit 8214



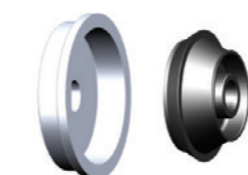
ART. 8216

- Plastic cup with widen diameter for allow wheels



ART. 8217

- Quick nut with lockring and rubber protection



ART. 8201

- Van wheel kit, hole dim. 122 - 174 mm



ART. 8202

- Slide lift



ART. 8203

- SUV cone 95 - 132 mm

ROLL 65

Monitor
Sonar
Automatic programs



- Internal electronic measuring arm for rim distance, diameter and wheel adhesive weights' positioning
- Automatic selecting program of balancing
- External SONAR measure wheel width
- Threaded screw 40 mm
- Pedal brake
- Ergonomically designed, allows the best access within the rim
- Fast measurement cycle in 4 second to save working time
- Split weight mode to place weights, hidden and unseen behind spokes
- Self-calibration and self-diagnosis

DATASHEET

	Accuracy: 1 gr
	Tire width: min 1,5" - max 20"
	Rim diameter: min 10" - max 30"
	Max wheel diameter: 1200 mm
	Rotation speed: 100 rpm
	Max wheel weight: 75 kg
	Weight: 140 kg
	Dimensions (H x D x L): 1400 x 1200 x 1300 mm
	Cardboard box packaging: 1950 x 1030 x 1540 mm

CODE	DESCRIPTION
8007	ROLL 65 Power supply: single-phase 230V - 50/60Hz

STANDARD EQUIPMENT



- Threaded screw with block 40 mm
- Quick nut
- N. 3 cones from 42 to 110 mm



- Weight pliers
- Calibration weight

EXTRA OPTION FOR WHEEL BALANCER ROLL 65



ART. 8207

- Motorbike flange kit



ART. 8208

- Motorbike threaded screw kit 19 mm with bushes



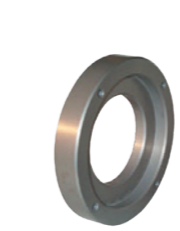
ART. 8204

- Precision bush kit from 52,5 to 122 mm of 9



ART. 8213

- 3-4-5 hole flange



ART. 8214

- Spacer for sport wheels



ART. 8215

- Bush for kit 8214



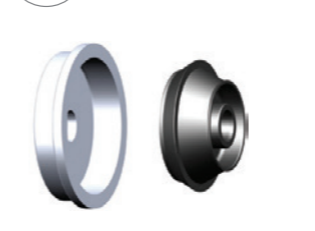
ART. 8216

- Plastic cup with widen diameter for allow wheels



ART. 8217

- Quick nut with lockring and rubber protection



ART. 8201

- Van wheel kit, hole dim. 122 - 174 mm



ART. 8202

- Slide lift



ART. 8203

- SUV cone 95 - 132 mm

ROLL75

Laser point
Automatic positioning
Sonar



- Internal measuring arm for rim distance and diameter
- Automatic selecting program of balancing
- External SONAR measure wheel width.
- Threaded screw 40 mm
- Electric brake
- Ergonomically designed, allows the best access within the rim
- Fast measurement cycle in 4 second to save working time
- Split weight mode to place weights, hidden and unseen behind spokes
- Self-calibration and self-diagnosis
- Automatic positioning
- LED light beam to illuminate the inside of the rim
- LASER point for exact positioning of wheel weights

DATASHEET

- Accuracy: 1 gr
- Tire width: min 1,5" - max 20"
- Rim diameter: min 10" - max 30"
- Max wheel diameter: 1200 mm
- Rotation speed: 160 rpm
- Max wheel weight: 80 kg
- Weight: 168 kg
- Dimensions (H x D x L): 1460 x 1600 x 1740 mm
- Cardboard box packaging: 1550 x 1650 x 1790 mm

CODE	DESCRIPTION
------	-------------

8016	ROLL 75 Power supply: single-phase 230V -50/60Hz
------	--

STANDARD EQUIPMENT



- Threaded screw with block 40 mm
- Quick nut
- N. 3 cones from 42 to 111,5 mm



- Weight pliers
- Calibration weight
- Weight sample

EXTRA OPTION FOR WHEEL BALANCER ROLL 75



ART. 8207

- Motorbike flange kit



ART. 8208

- Motorbike threaded screw kit 19 mm with bushes



ART. 8204

- Precision bush kit from 52,5 to 122 mm of 9



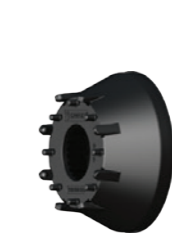
ART. 8205

- 3-4-5 hole flange



ART. 8209

- Quick nut



ART. 8210

- Lockring cap



ART. 8211

- Rubber gasket for alloy wheels



ART. 8201

- Van wheel kit, hole dim. 122 - 174 mm



ART. 8202

- Slide lift



ART. 8203

- SUV cone 95 - 132 mm

ROLL76

P-LOCK
Laser point
Automatic positioning
Sonar



- Internal measuring arm for rim distance and diameter
- Automatic selecting program of balancing
- External SONAR measure wheel width.
- Threaded screw 40 mm
- Electric brake
- Ergonomically designed, allows the best access within the rim
- Fast measurement cycle in 4 second to save working time
- Split weight mode to place weights, hidden and unseen behind spokes
- Self-calibration and self-diagnosis
- Automatic positioning
- LED light beam to illuminate the inside of the rim
- LASER point for exact positioning of wheel weights
- Pneumatic wheel locking P-LOCK

DATASHEET

- gr** Accuracy: 1 gr
- mm** Tire width: min 1,5" - max 20"
- mm** Rim diameter: min 10" - max 30"
- mm** Max wheel diameter: 1200 mm
- rpm** Rotation speed: 160 rpm
- kg** Max wheel weight: 80 kg
- kg** Weight: 178 kg
- mm** Dimensions (H x D x L): 1460 x 1600 x 1740 mm
- mm** Cardboard box packaging: 1550 x 1650 x 1790 mm

CODE	DESCRIPTION
8021	ROLL 76 Power supply: single-phase 230V - 50/60Hz

STANDARD EQUIPMENT



- Threaded screw with block 40 mm
- Quick nut
- N. 4 cones from 42 to 110 mm



- Weight pliers
- Calibration weight
- Weight sample

EXTRA OPTION FOR WHEEL BALANCER ROLL 75



ART. 8207

- Motorbike flange kit



ART. 8208

- Motorbike threaded screw kit 19 mm with bushes



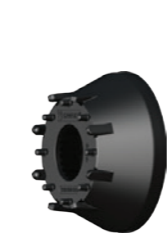
ART. 8204

- Precision bush kit from 52,5 to 122 mm of 9



ART. 8205

- 3-4-5 hole flange



ART. 8210

- Lockring cap



ART. 8211

- Rubber gasket for alloy wheels



ART. 8201

- Van wheel kit, hole dim. 122 - 174 mm



ART. 8202

- Slide lift



ART. 8203

- SUV cone 95 - 132 mm

ROLL 85

Truck and cars
Automatic caliber
Wheel side lift



- Internal electronic measuring arm for rim distance, diameter and wheel adhesive weights' positioning.
- Automatic selection of balancing program car/truck
- Threaded screw 40 mm
- Pneumatic side lift for truck wheels
- Electric brake
- Ergonomically designed, allows the best access within the rim
- Hidden behind spokes, wheel weights' program
- Self-calibration and self-diagnosis

DATASHEET

- Accuracy: 1 gr
- Tire width: min 2" - max 20"
- Rim diameter: min. 8" - max 30"
- Max wheel diameter: 1150 mm
- Rotation speed: 160 rpm
- Max wheel weight: 200 kg
- Weight: 280 kg
- Dimensions (H x D x L): 1460 x 1750 x 2230 mm

CODE	DESCRIPTION
8051	ROLL 85 Power supply: single-phase 230V - 50/60Hz

STANDARD EQUIPMENT



- Threaded screw with block 40 mm
- Quick nut
- N. 3 cones from 42 to 111,5 mm



- Weight pliers
- Calibration weight
- Weight sample

RECOMMENDED ACCESSORIES



- ART. 8223**
• Truck wheel centering kit

EXTRA OPTION FOR WHEEL BALANCER ROLL 85



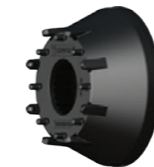
ART. 8204

- Precision bush kit from 52,5 to 122 mm of 9



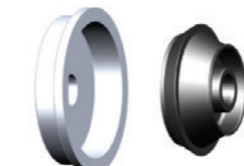
ART. 8205

- 3-4-5 hole flange



ART. 8210

- Lockring cap



ART. 8201

- Van wheel kit, hole dim. 122 - 174 mm



ART. 8203

- SUV cone 95 - 132 mm

ART. 8224

- External measuring width arm



ART. 7050

- Inflation cage for truck tires

INFLATION CAGE FEATURES

Weight: 166 kg
External dimensions (H x D x L): 1580 x 1600 x 800 mm
Internal dimensions (H x D x L): 1500 x 1500 x 700 mm
Maximum tire diameter: 1500 mm
Maximum tire width: 700 mm



VISION line
WHEEL ALIGNMENT

VISION line

VISION 45

Radio transmission
Accelerometer
Lithium battery



• Tablet or PC not included in the kit

- Maximum steering angle 20°
- 4 precision jaws for all standard rims for an accurate closing
- 8 CCD sensors for a complete side to side measuring
- Two-phase EASY rolling runout compensation, 30° front, 30° back
- Ultralight crushproof aluminium sensors
- A user-friendly software with graphics and animation guides the operator during alignment
- Toe adjustment program with steered wheels for a better access to the vehicle's mechanics
- Immediate measurement of parameters software
- Suitable for any light condition
- Complete radio transmission. Frequency band 2.4 Ghz
- Double database for customer and manufacturer.
- Measuring sensors with intelligent charging system
- Long lasting lithium batteries
- Direct measurement of wheelbase and wheel track
- Consistent with Windows 7 / 8 / 10 32 and 46 Bit
- Database updated with over 55.000 vehicles

DATASHEET

- Easy run out: 45°
- Weight: 25 kg
- Cardboard box packaging: 960 x 660 x 1160 mm
- Wheel clamps: 10" - 24"

MAXIMUM MEASURING RANGE

Total toe	18°
Single toe	9°
Camber	10°
Wheel setback	9°
Caster	22°
Steering axis inclination	22°
Toe-out on turns	20°
Axis offset	9°

CODE DESCRIPTION

4005	VISION 45 Power supply: single-phase 230V - 50/60Hz
-------------	---

STANDARD EQUIPMENT



- N. 4 precision jaws for all standard rims



- Double set of endpins for jaws,
N. 16 pcs length 45 mm
N. 16 pcs length 81,5 mm



- Steering wheel lock
- Brake blocks

EXTRA OPTIONS FOR WHEEL ALIGNMENT VISION 45



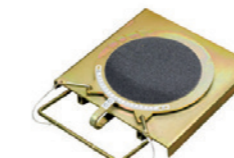
ART. 371

- Set of 4, wheel alignment stands



ART. 4201

- Set of 2 aluminium turning plates with pad
450x450 thickness 50 mm
- Capacity 1000 kg



ART. 4203

- Set of 2 turning plates classic line 452x452 mm
thickness 48,5 mm
- Capacity 500 kg



ART. 4206

- Kit of 4 clamps grab-on-tire



ART. 4208

- Database uploading for VISION 45



ART. 4214

- Steering wheel level for alignment



ART. 4218

- Kit of 4 hang-on-tire clamps 13" - 28" with spacers 100 mm

VISION 46

Truck and cars
Radio transmission
Accelerometer
Lithium battery



• Tablet or PC not included in the kit

- Maximum steering angle 20°
- 4 precision jaws for all standard rims for an accurate closing
- 8 CCD sensors for a complete side to side measuring
- Two-phase EASY rolling runout compensation, 30° front, 30° back
- Ultralight crushproof aluminium sensors
- A user-friendly software with graphics and animation guides the operator during alignment
- Specific software for Truck adjustments with customized vehicle's selection
- Toe adjustment program with steered wheels for a better access to the vehicle's mechanics (only auto mode)
- Immediate measurement of parameters software
- Suitable for any light condition
- Complete radio transmission. Frequency band 2.4 Ghz
- Double database for customer and manufacturer.
- Measuring sensors with intelligent charging system
- Long lasting lithium batteries
- Direct measurement of wheelbase and wheel track
- Consistent with Windows 7 / 8 / 10 32 and 46 Bit
- Database updated with over 95.000 vehicles

DATASHEET

- Easy run out: 45°
- Weight: 30 kg
- Cardboard box packaging: 960 x 660 x 1160 mm
- Wheel clamps: 10" - 24"

MAXIMUM MEASURING RANGE

Total toe	18°
Single toe	9°
Camber	10°
Wheel setback	9°
Caster	22°
Steering axis inclination	22°
Toe-out on turns	20°
Axis offset	9°

CODE	DESCRIPTION
------	-------------

4006	VISION 46 Power supply: single-phase 230V - 50/60Hz
-------------	---

STANDARD EQUIPMENT



- N. 4 precision jaws for all standard rims



- Triple set of endpins for jaws,
N. 16 pcs length 45 mm
N. 16 pcs length 81,5 mm
N. 16 pcs length 120 mm



- Steering wheel lock
- Brake blocks

EXTRA OPTIONS FOR WHEEL ALIGNMENT VISION 46



ART. 4209

- Database uploading for VISION 46



ART. 4213

- Set of 2 turning plates for truck
- Capacity 6000 kg



ART. 4214

- Steering wheel level for alignment



ART. 4217

- Adaptor rod for semitrailers

VISION 80

High definition camera
Automatic vehicle tracking



- High definition camera
- Automatic vehicle height tracking - the camera system follows the height of the vehicle, eliminating the need to adjust the aligner when you move the lift
- Advanced software measuring wheelbase, wheel truck and cross diagonal
- New generation, handier targets
- Monitor 27", integrated industrial PC ensure greater stability
- Color printer
- Aluminium precision jaws 10" - 24"
- Reversible endpins
- Windows operating system
- Customizable, user-friendly software
- Shortened RUN OUT compensation allows minimum displacement of the vehicles
- Integrated database includes more than 55.000 vehicles
- Highly precise and reliable measurement
- Convergence, chamber and maximum steering angle are directly measured

DATASHEET

Easy run out: 20°

Weight: 310 kg

Wheel clamps: 10" - 24"

MAXIMUM MEASURING RANGE

Total convergence	18°
Single convergence	9°
Chamber	10°
Setback	9°
Incidence	22°
Tilt steering axis	22°
Toe-out on turns	20°
Axis offset	9°

CODE	DESCRIPTION
------	-------------

4015	VISION 80 Power supply: single-phase 230V - 50/60Hz
-------------	---

STANDARD EQUIPMENT



- Self-centering adaptors



- Set of 2 aluminium tournable plated with pads 450x450 thickness 50 mm
- Capacity 1000 kg



- Steering wheel lock
- Brake blocks

EXTRA OPTIONS FOR WHEEL ALIGNMENT VISION 80



ART. 4201

- Set of 2 aluminium turning plates with pads 450x450 thickness 50 mm
- Capacity 1000 kg



ART. 4210

- Database uploading for VISION 80



ART. 4214

- Steering wheel level for alignment



24020 VILLA DI SERIO (BG) ITALY

Via Divisione Tridentina, 23

T. 035 423 44 11 • F. 035 423 44 41 • 035 423 44 42

www.omcn.it • info@omcn.it

EXPORT

T. +39 035 423 44 16 • F. +39 035 423 44 49

www.omcn.com • info@omcn.com